



# Precious Stones

Histories in Stone

GLAZE



CRYSTAL WHITE WITH GOLD

## From Ornament to Architecture

For centuries, precious stones have held a revered place in art, design, and culture. From ancient temples to royal courts, these materials were used to adorn jewelry, religious artifacts, mosaics, and inlaid furniture. Throughout history these stones have been cherished for their beauty and rarity. Malachite decorated the Palace of Versailles; Jasper worn in signet rings by ancient Roman emperors, Cleopatra was known to favor Tiger's Eye jewelry.

Today, advanced technology transforms these storied materials into large-format slabs that can be appreciated on an architectural scale. When used for walls, floors, counter tops, and furniture, these stones become functional art: tactile, visually arresting, and uniquely one-of-a-kind.

Each slab captures geological time in physical form, offering designers and makers a chance to work with something truly precious.

# Agate

Known for its fine banding and layered translucency, agate comes in a wide range of earthy and vibrant tones. Each slice reveals intricate natural patterns, making it ideal for decorative applications. In the Roman Empire, agate was carved into cameos and ornamental vessels, prized for its striking layers and durability.

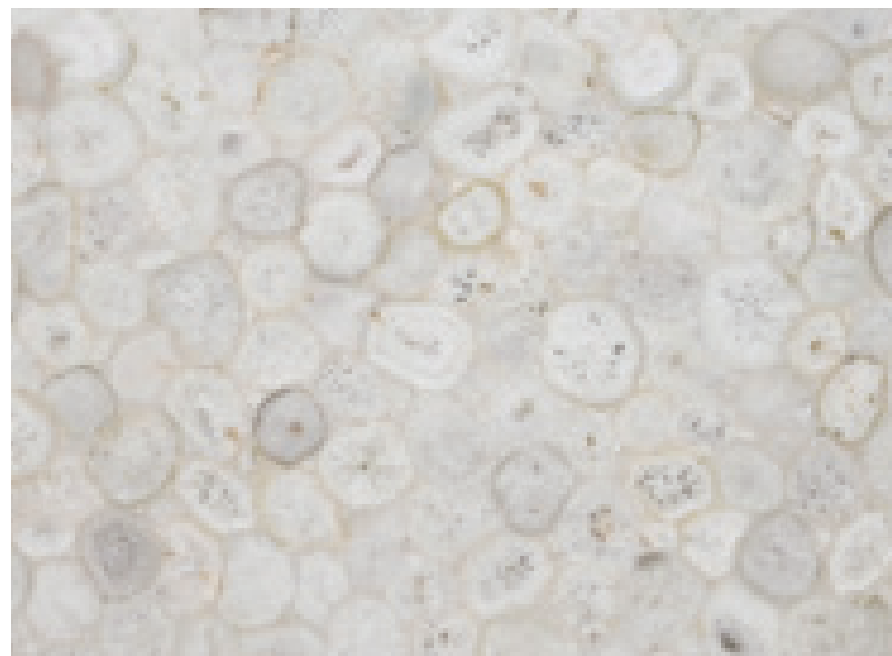
AGATE BLUE GIANT

GLAZE





AGATE JELLYFISH



5



GLAZE



AGATE JELLYFISH WITH GOLD



6



7

GLAZE

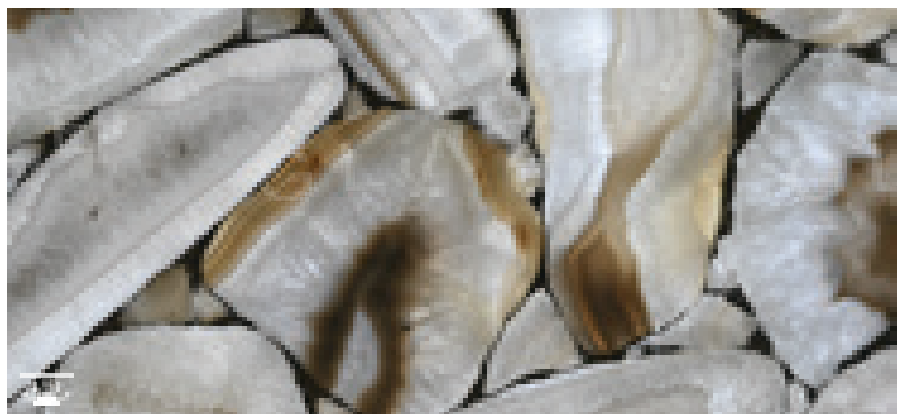


AGATE CRYSTAL WITH GOLD



GLAZE

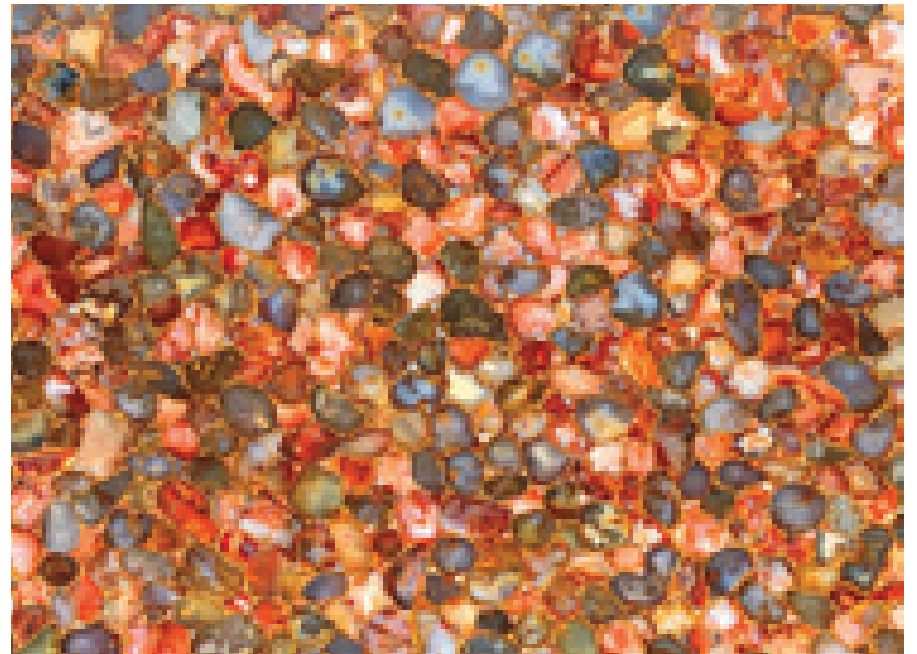
AGATE PLATINUM SILVER



GLAZE

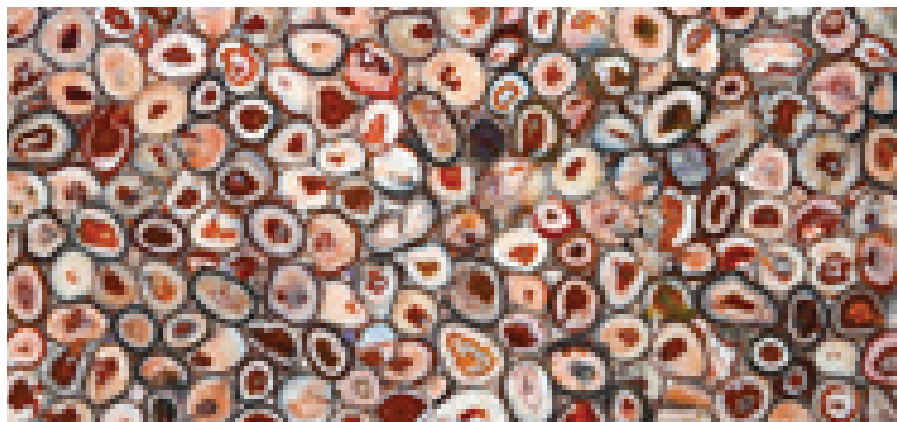


AGATE CEZANNE



GLAZE

AGATE RED



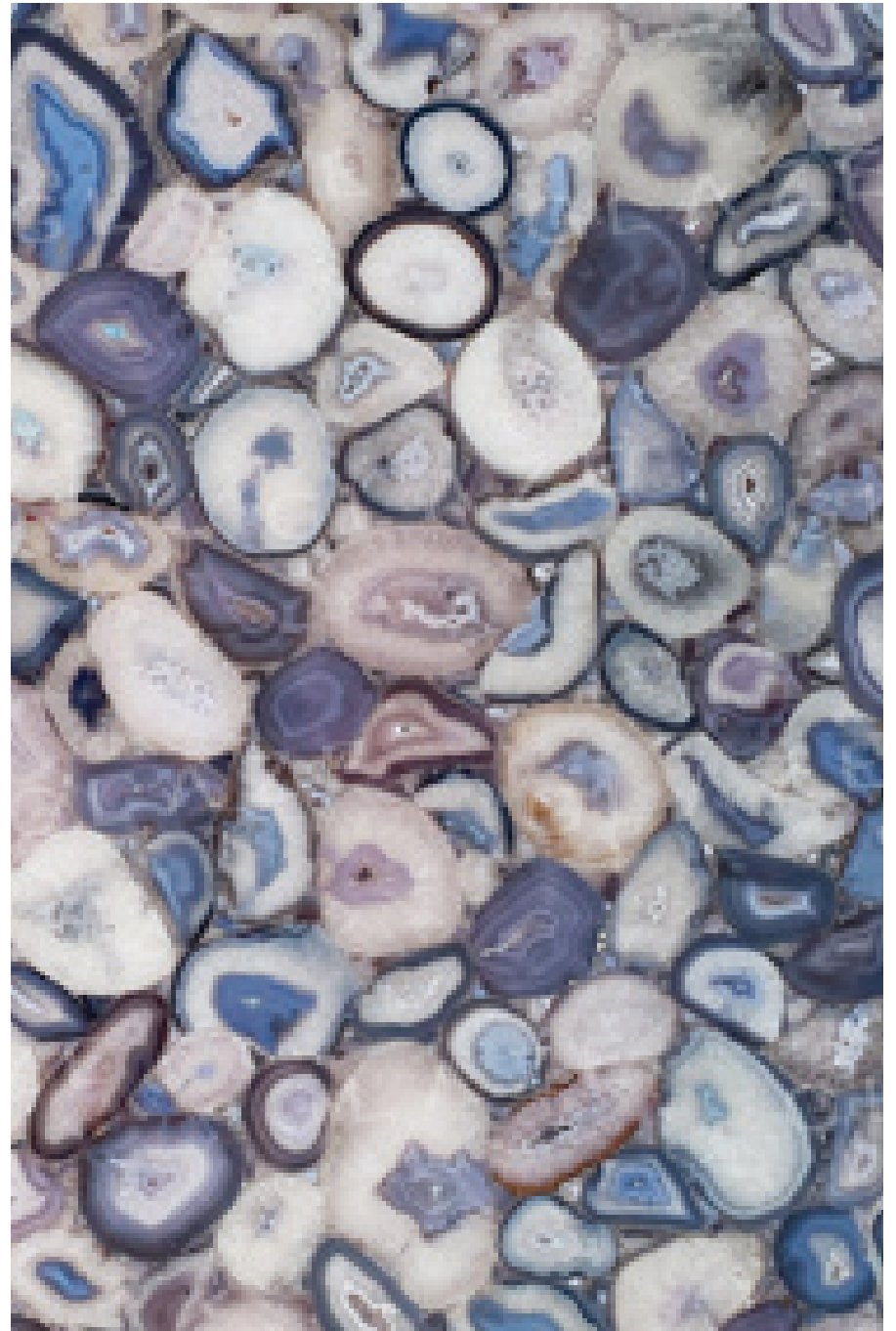
14



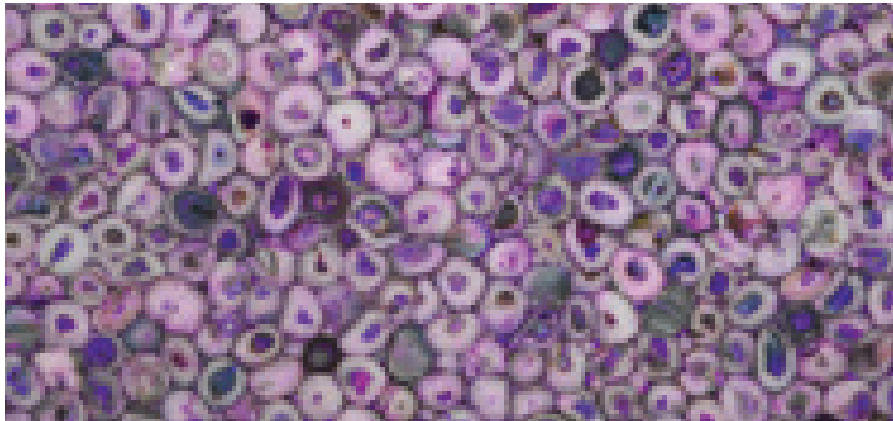
15

GLAZE



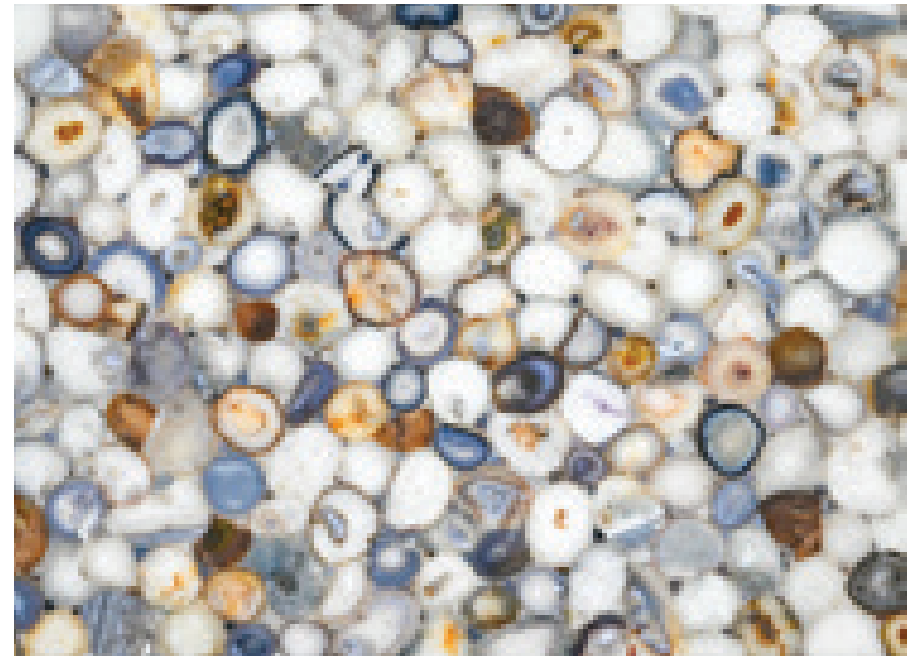


AGATE PURPLE





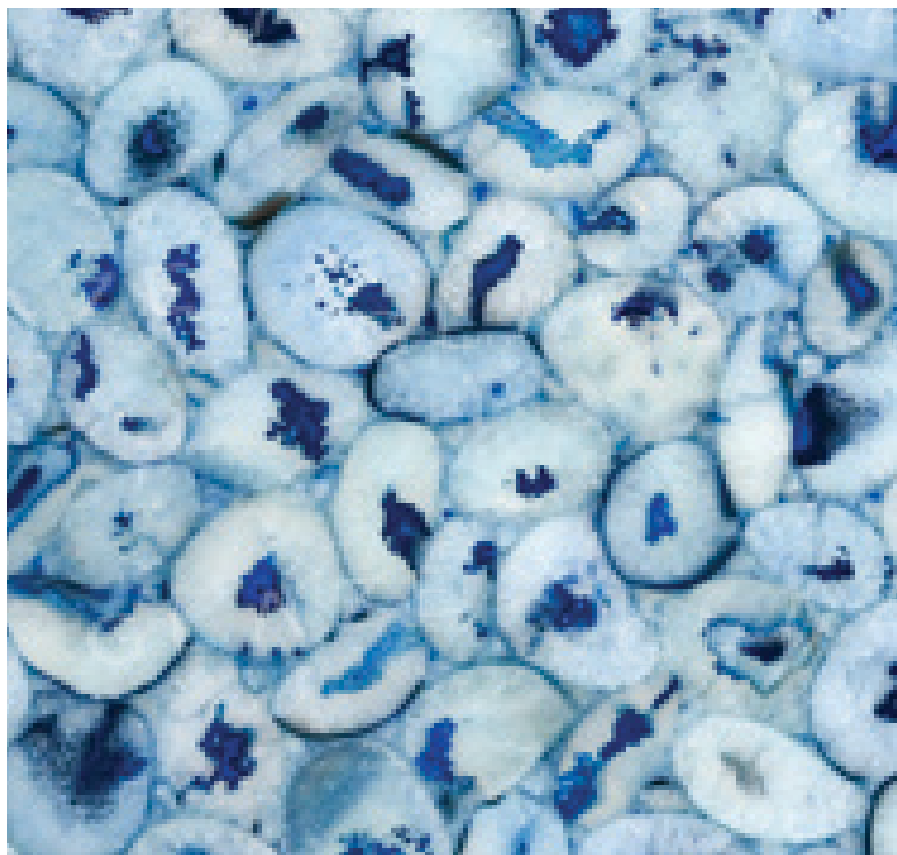
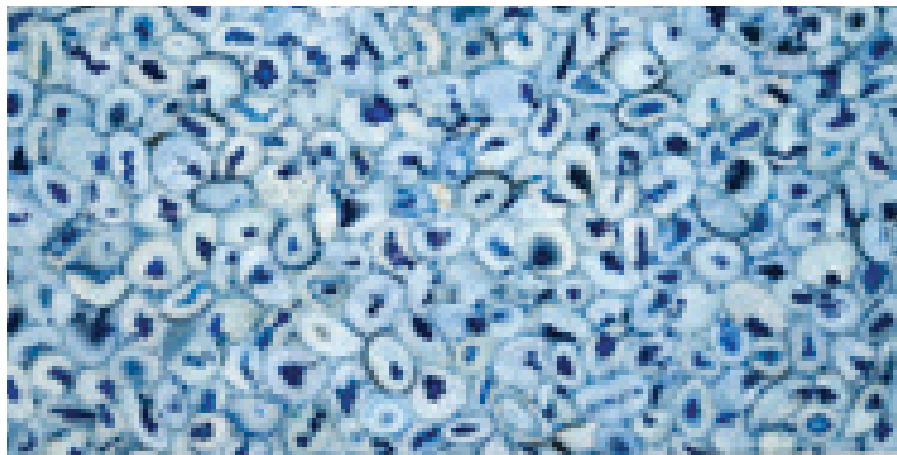
AGATE NATURAL



GLAZE



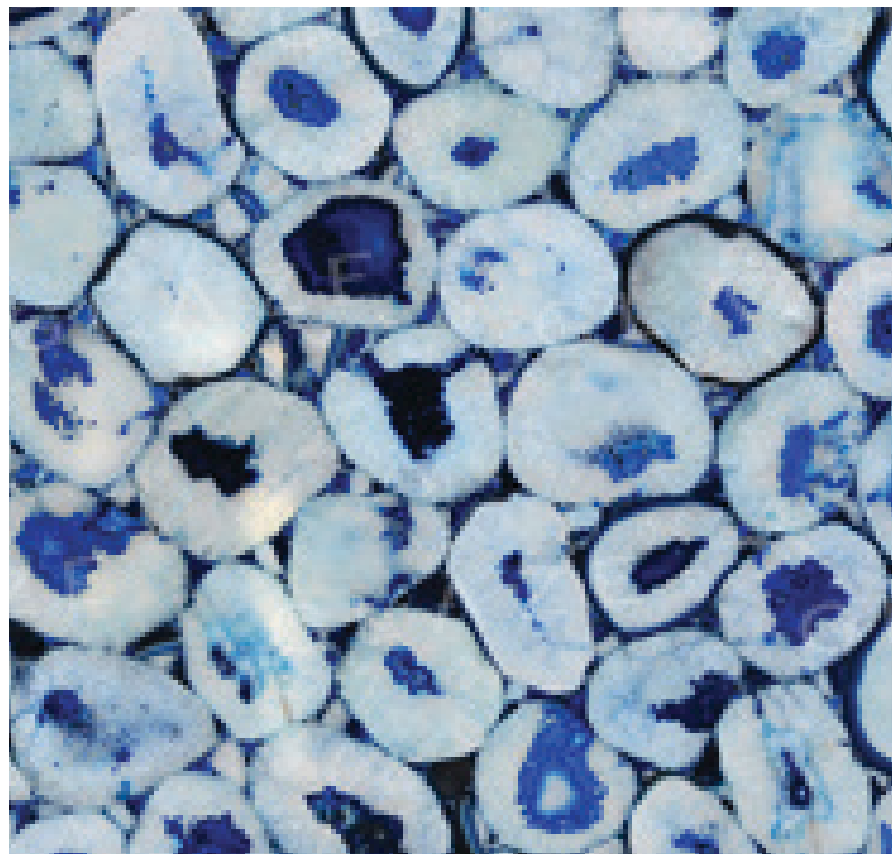
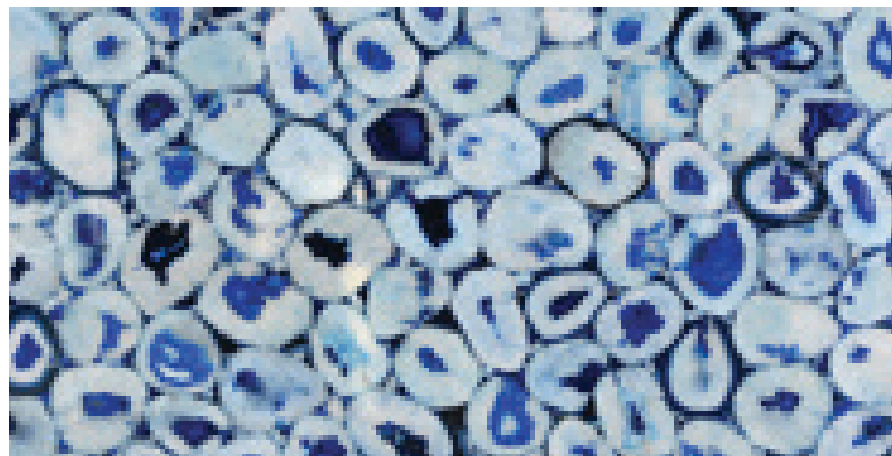
AGATE BLUE LIGHT





24

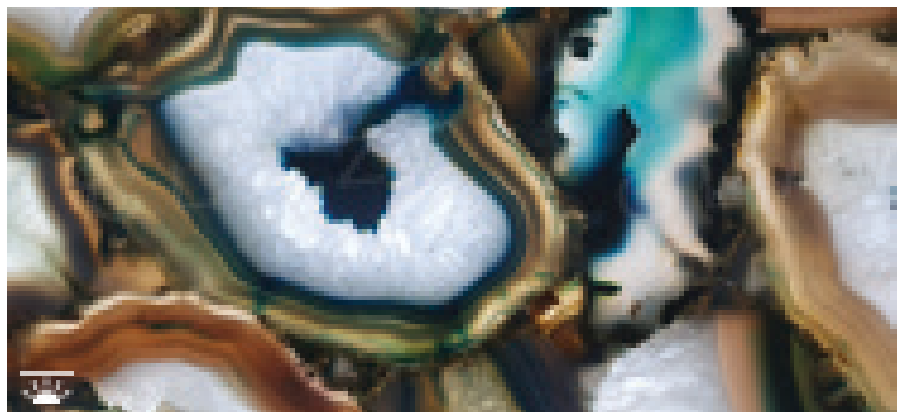
AGATE BLUE GIANT



25

GLAZE

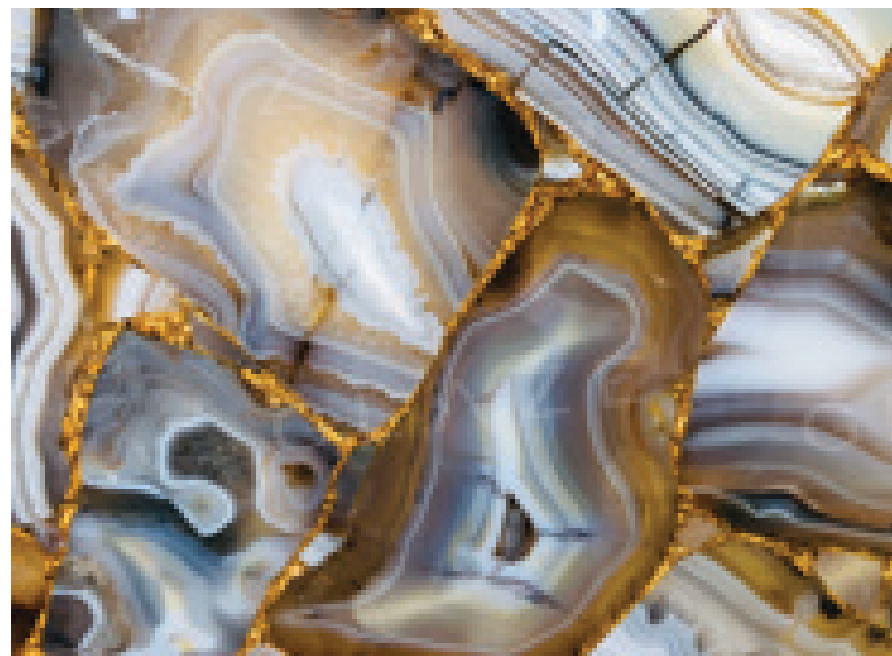
AGATE DELTA GIANT



GLAZE

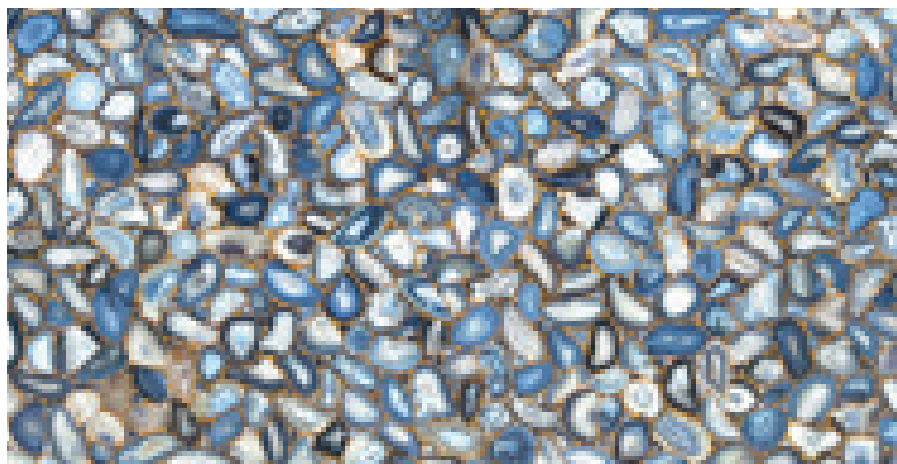


AGATE RUBANE WITH GOLD



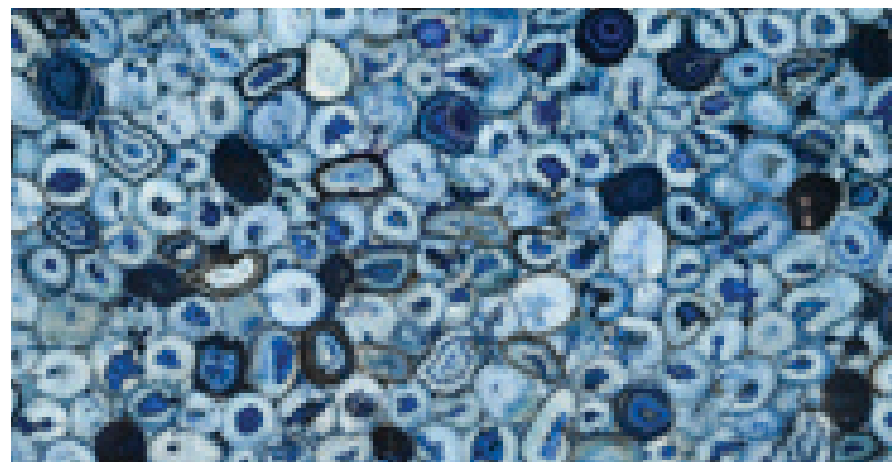
GLAZE

AGATE NATURAL WITH GOLD





AGATE BLUE DARK

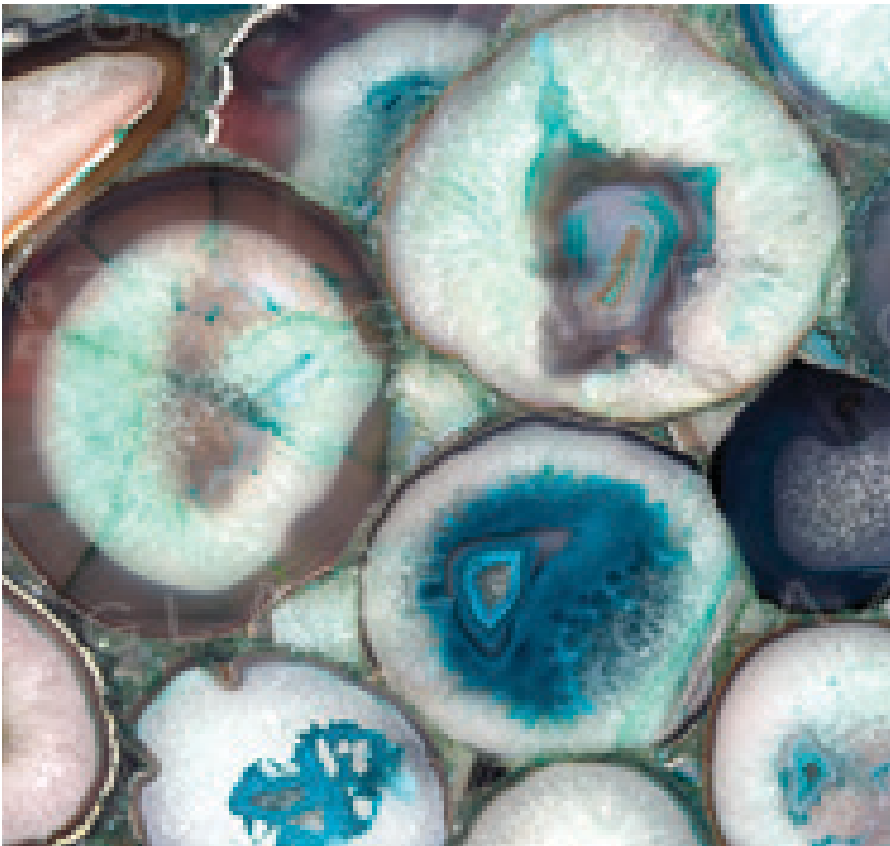


GLAZE

AGATE GREEN

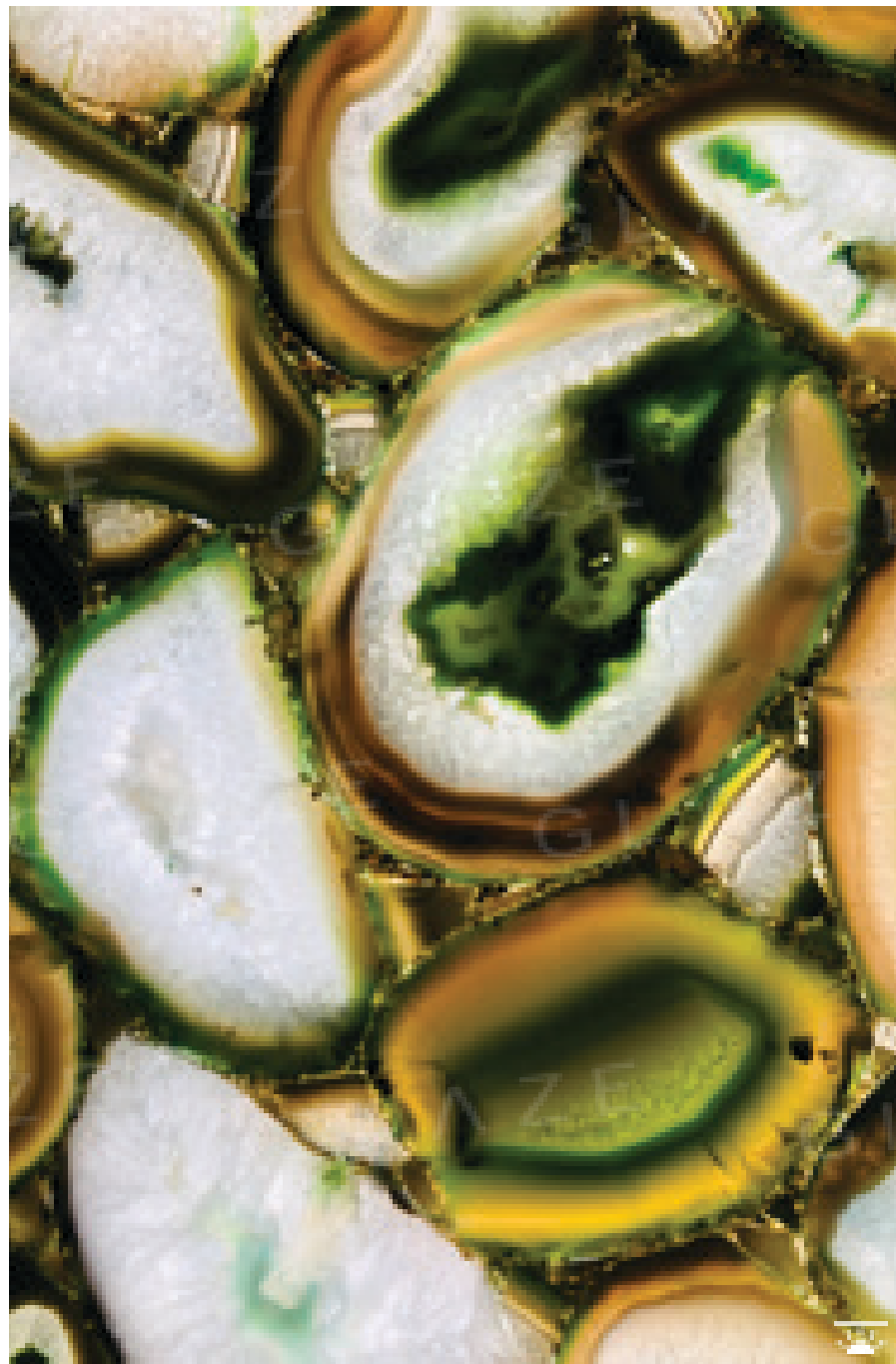


34



35

GLAZE







AGATE GREY PHOENIX



AGATE GREY GIANT



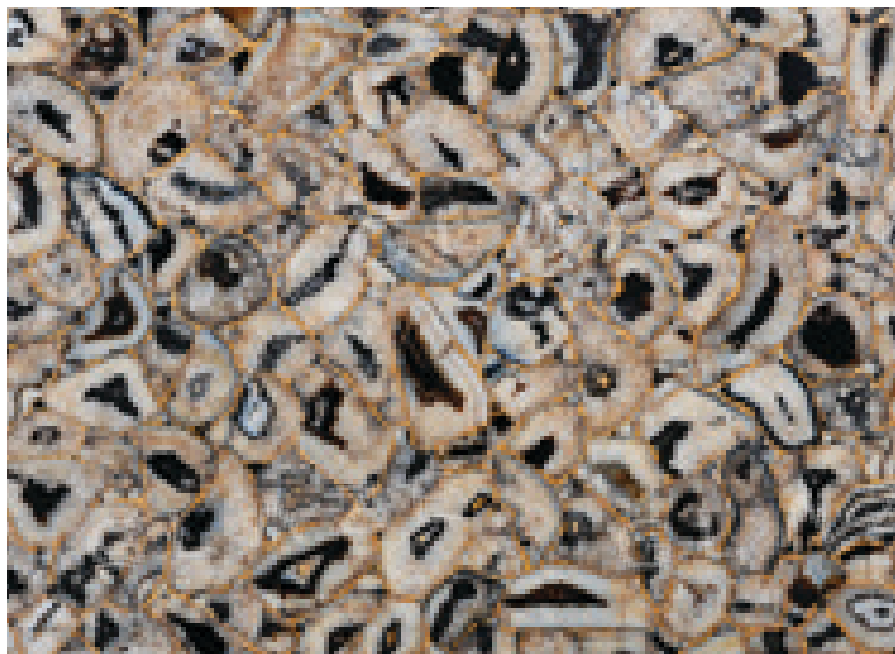
GLAZE



AGATE ATENA GIANT WITH GOLD



AGATE ATENA WITH GOLD



44

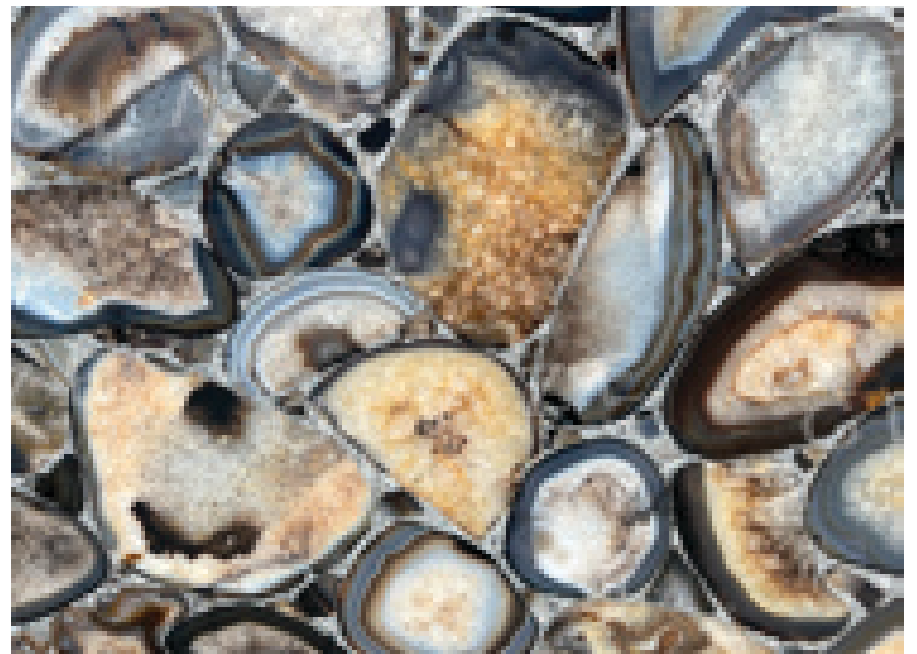
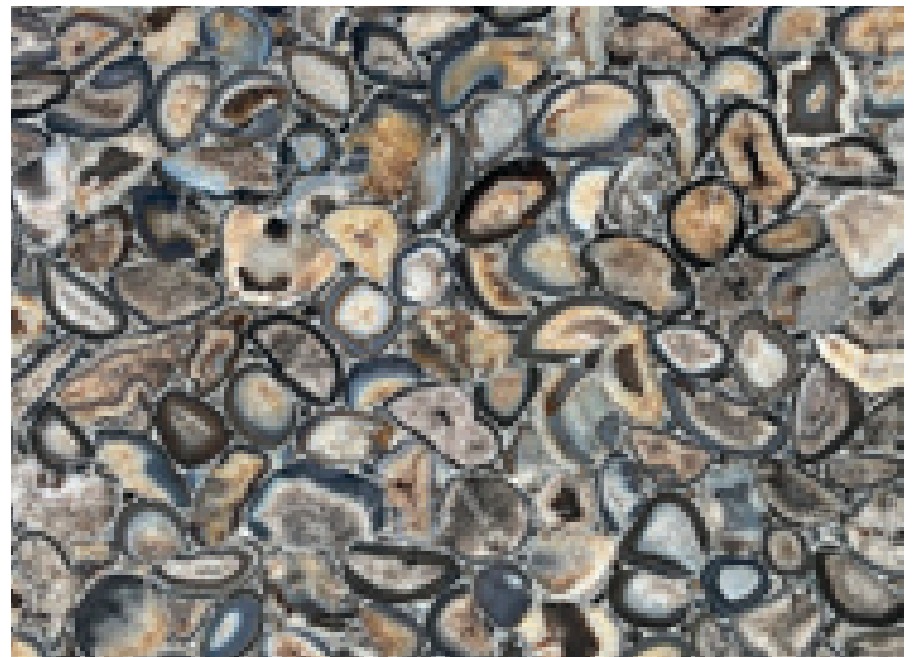


45

GLAZE

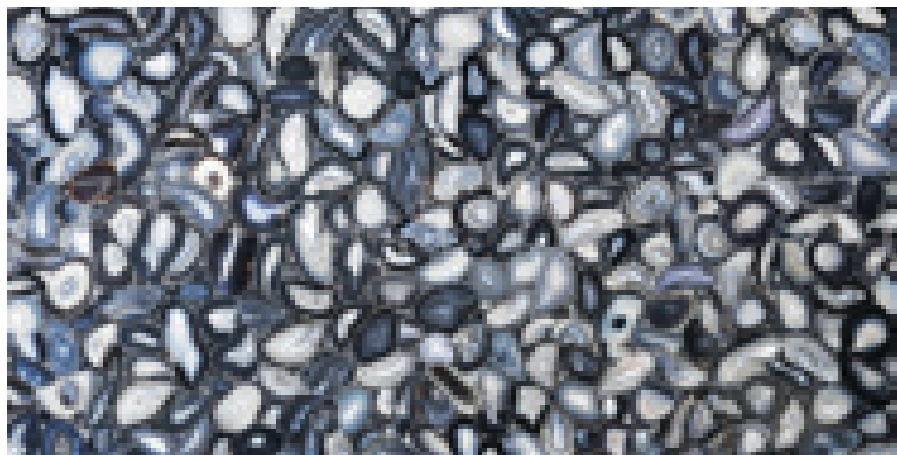


AGATE UMBRA SILVER



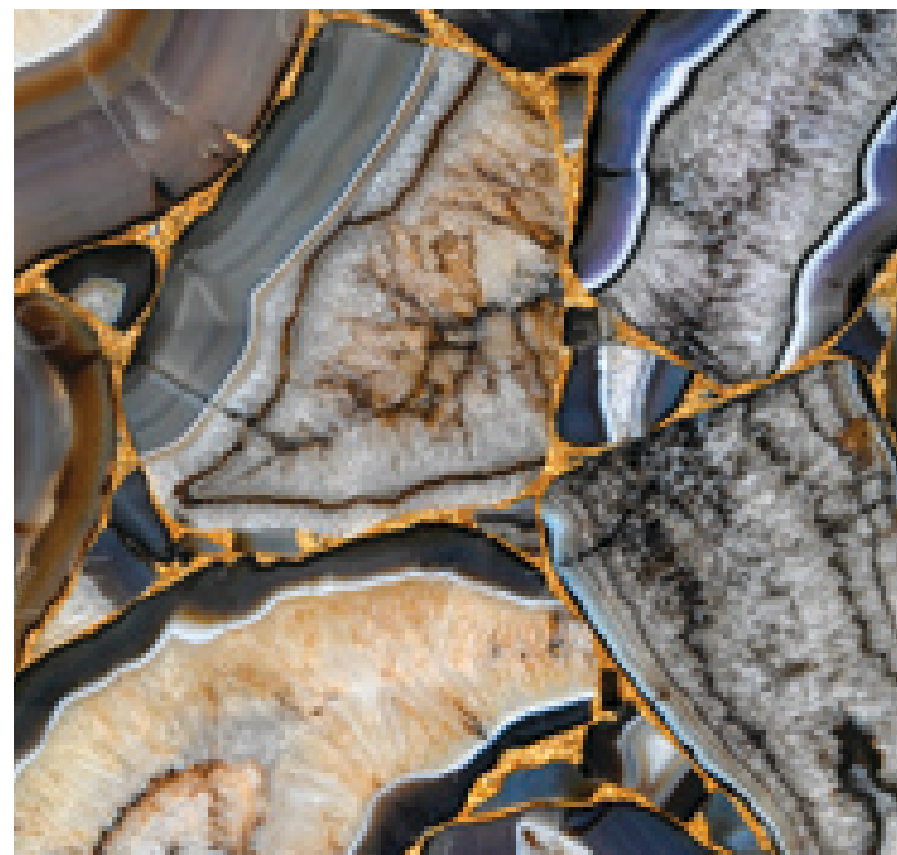
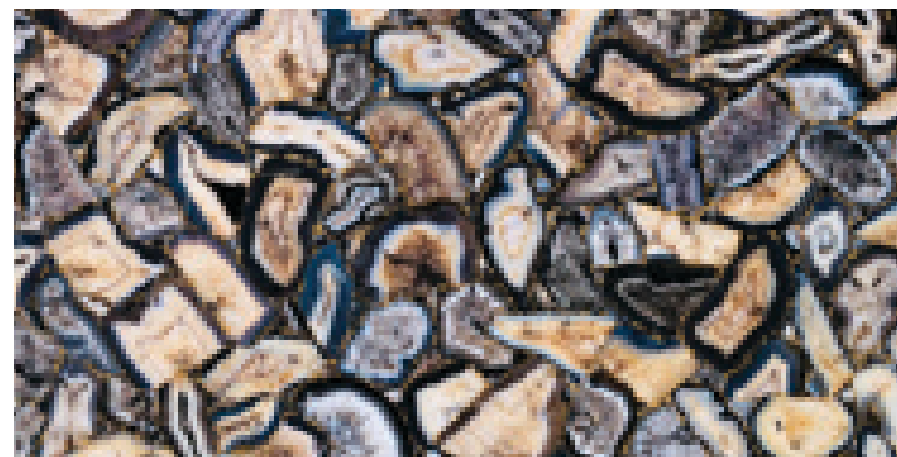
GLAZE

AGATE GREY

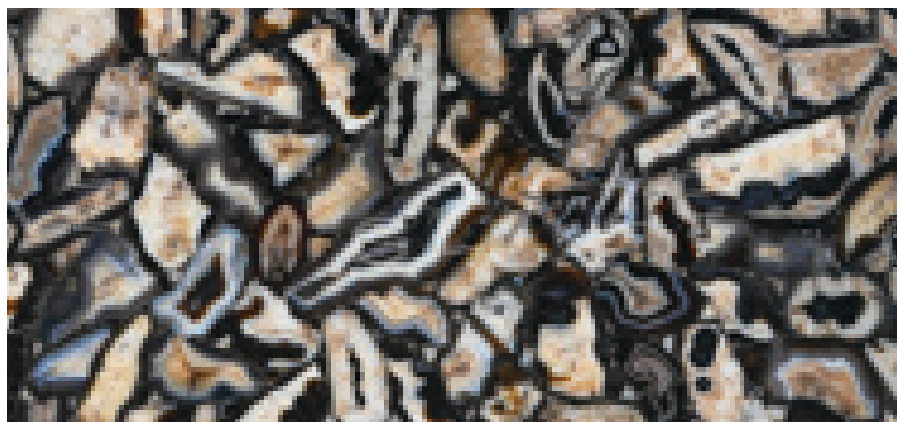




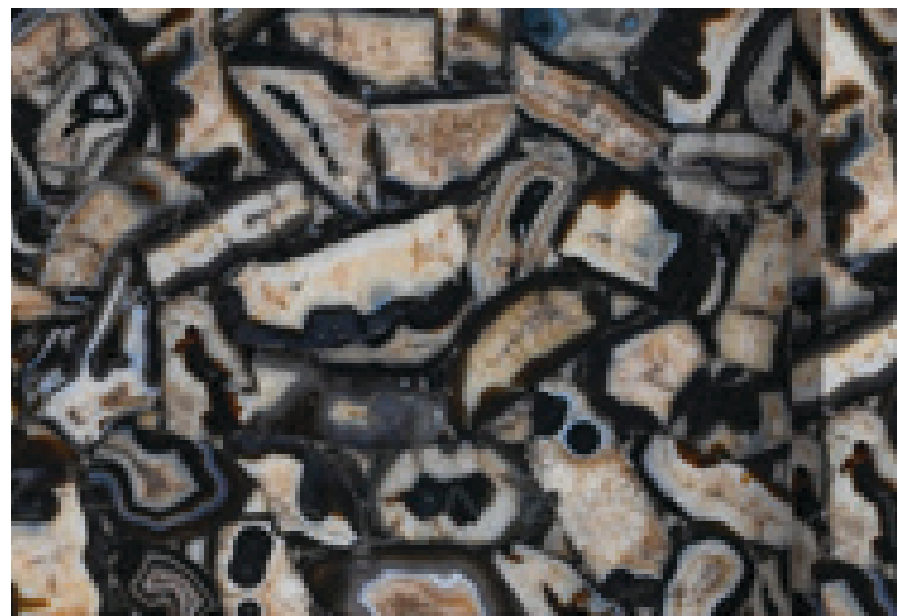
AGATE PHOENIX GIANT WITH GOLD



AGATE PHOENIX GIANT



52



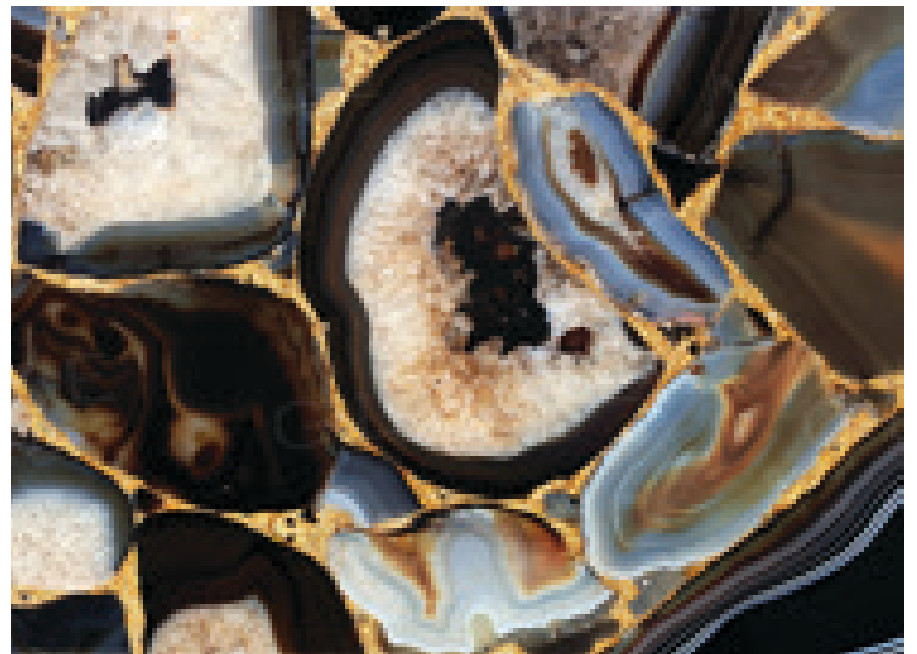
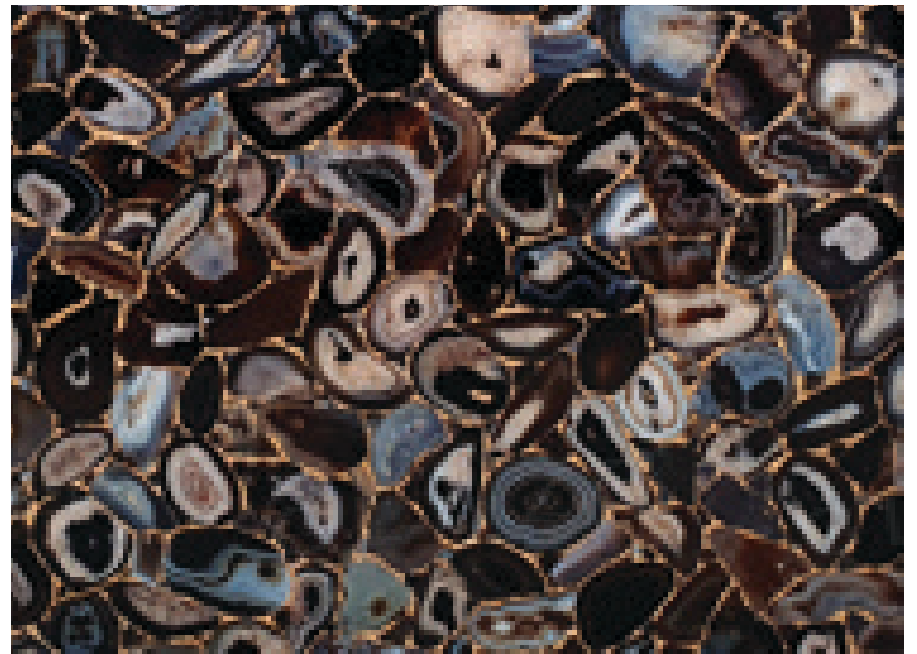
53

GLAZE

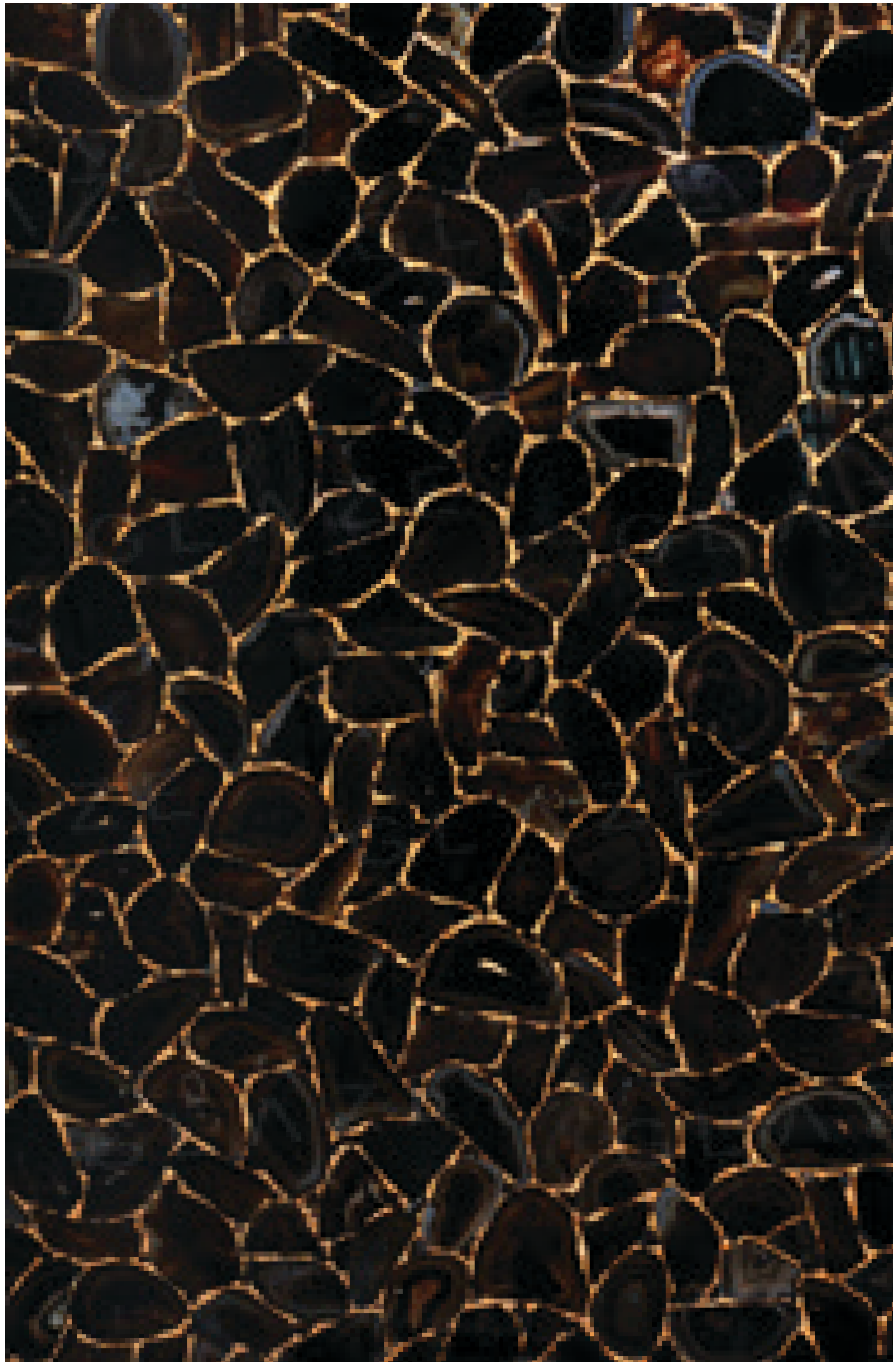




AGATE UMBRA WITH GOLD



GLAZE



# Crystal Quartz

A clear, highly versatile stone prized for its purity and light-reflecting properties, crystal quartz adds clean, modern elegance to both contemporary and traditional designs. It has been incorporated into Renaissance chandeliers and ecclesiastical objects, enhancing light diffusion in sacred spaces.

CRYSTAL WHITE

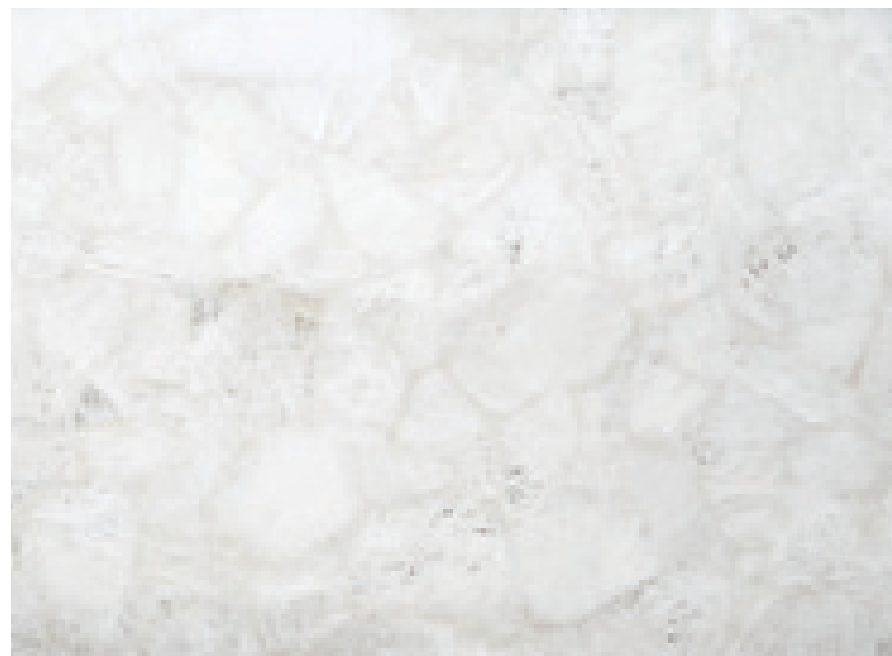




60



CRYSTAL WHITE

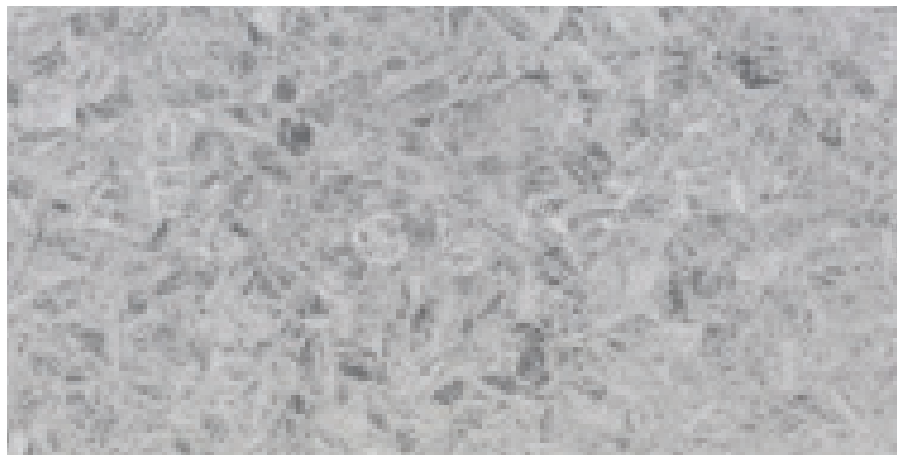


61



GLAZE

CRYSTAL TRANSPARENT



62



63

GLAZE



CRYSTAL WHITE WITH GOLD



CRYSTAL BRIGHT PINK



GLAZE



CRYSTAL QUARTZ PINK



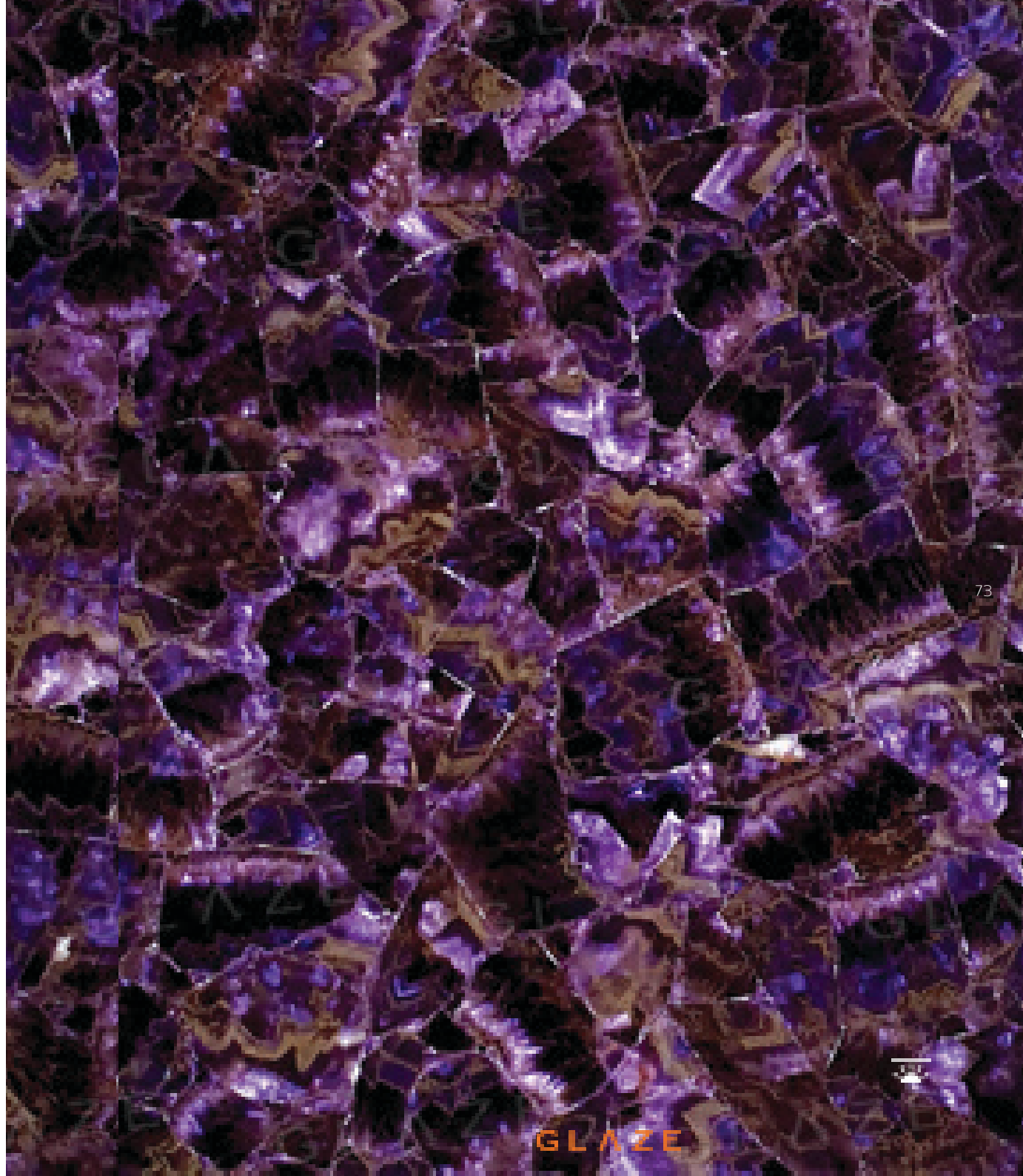
GLAZE





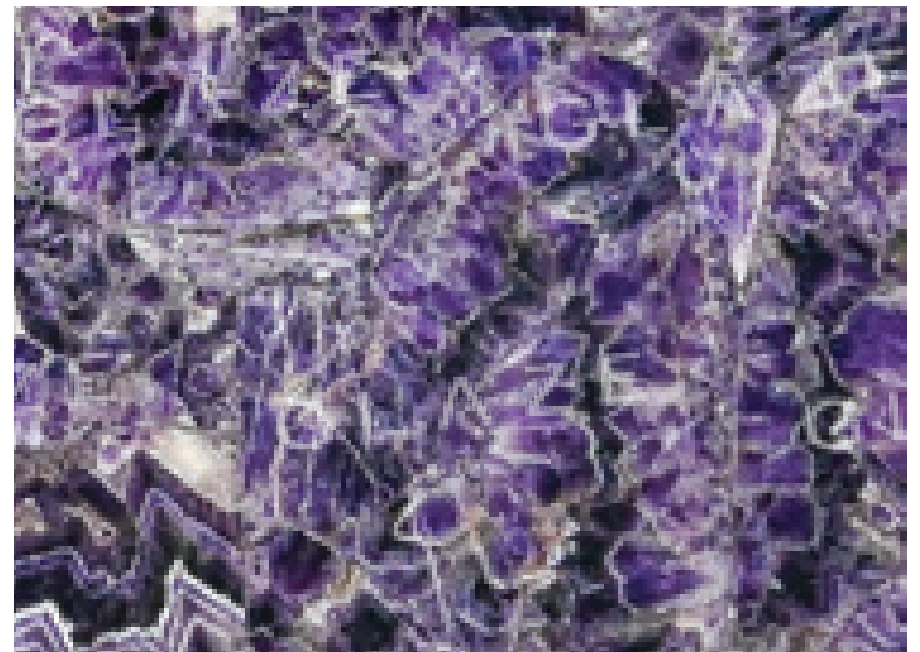
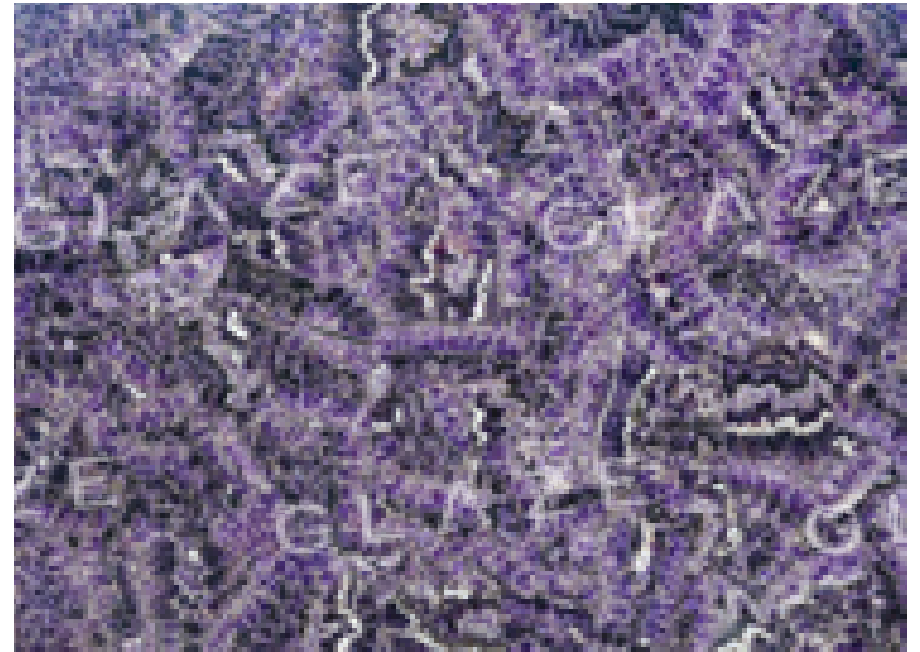
# Amethyst

This violet-toned quartz is known for its vibrant color and crystalline clarity. Long valued for its calming properties, amethyst featured in medieval cathedral stained glass and religious jewelry, symbolizing spirituality and protection.





AMETHYST DARK



GLAZE

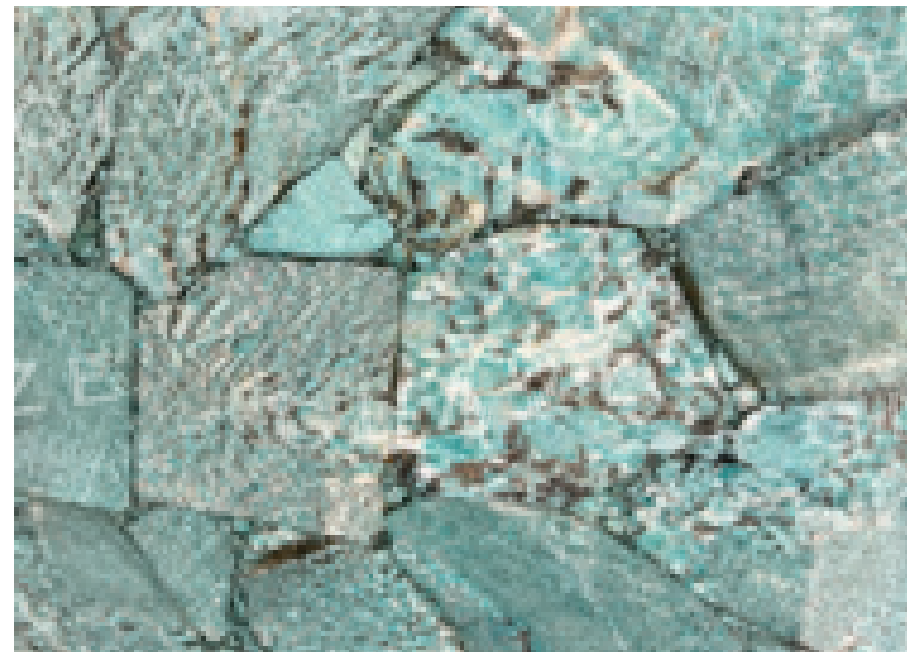
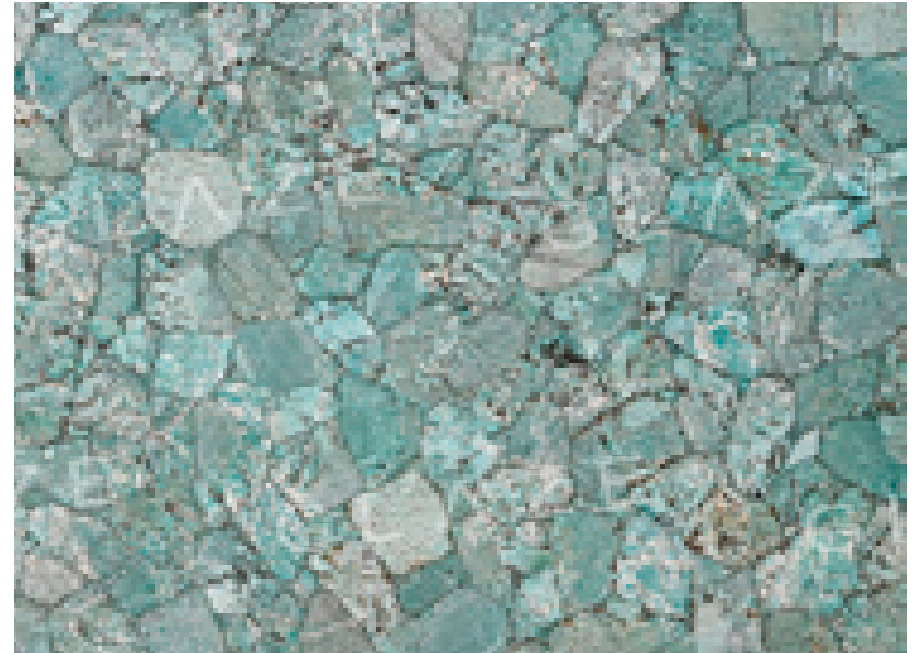
# Amazonite

With soft turquoise and green hues and a smooth, matte finish, amazonite evokes calmness and balance. Ancient Egyptians used amazonite beads and amulets in jewelry, associating the stone with fertility and ethereal beauty.





AMAZONITE



GLAZE

# Jasper

Cool yet earthy colors and patterns define Jasper's opaque, grounded appearance. This mineral quartz was carved into Roman intaglios, prints, jewelry and ornamental vessels, valued for its durability and rich hues.

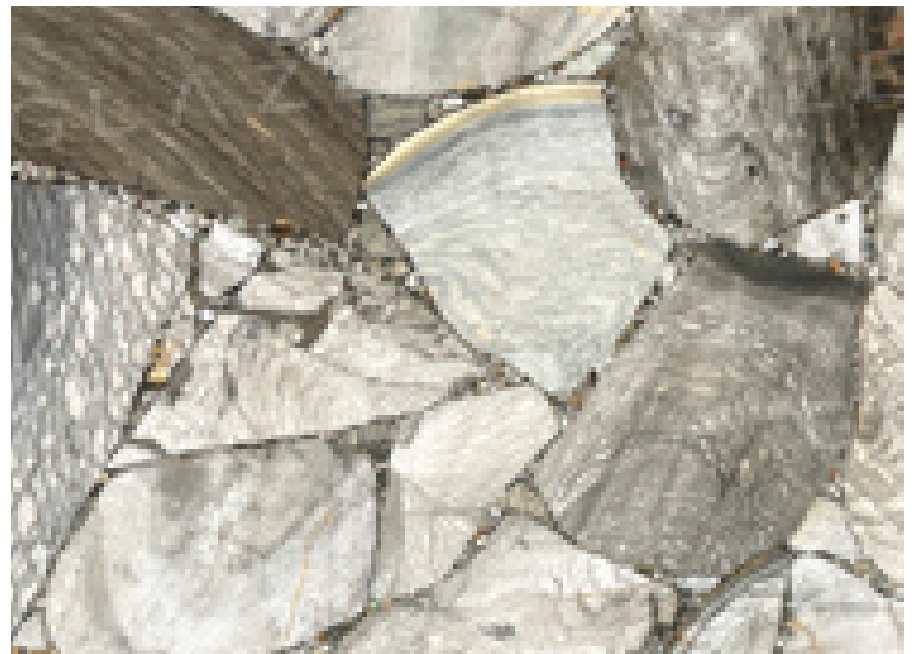
JASPER SHELLFINT

GLAZE





JASPER SHELLFINT



GLAZE

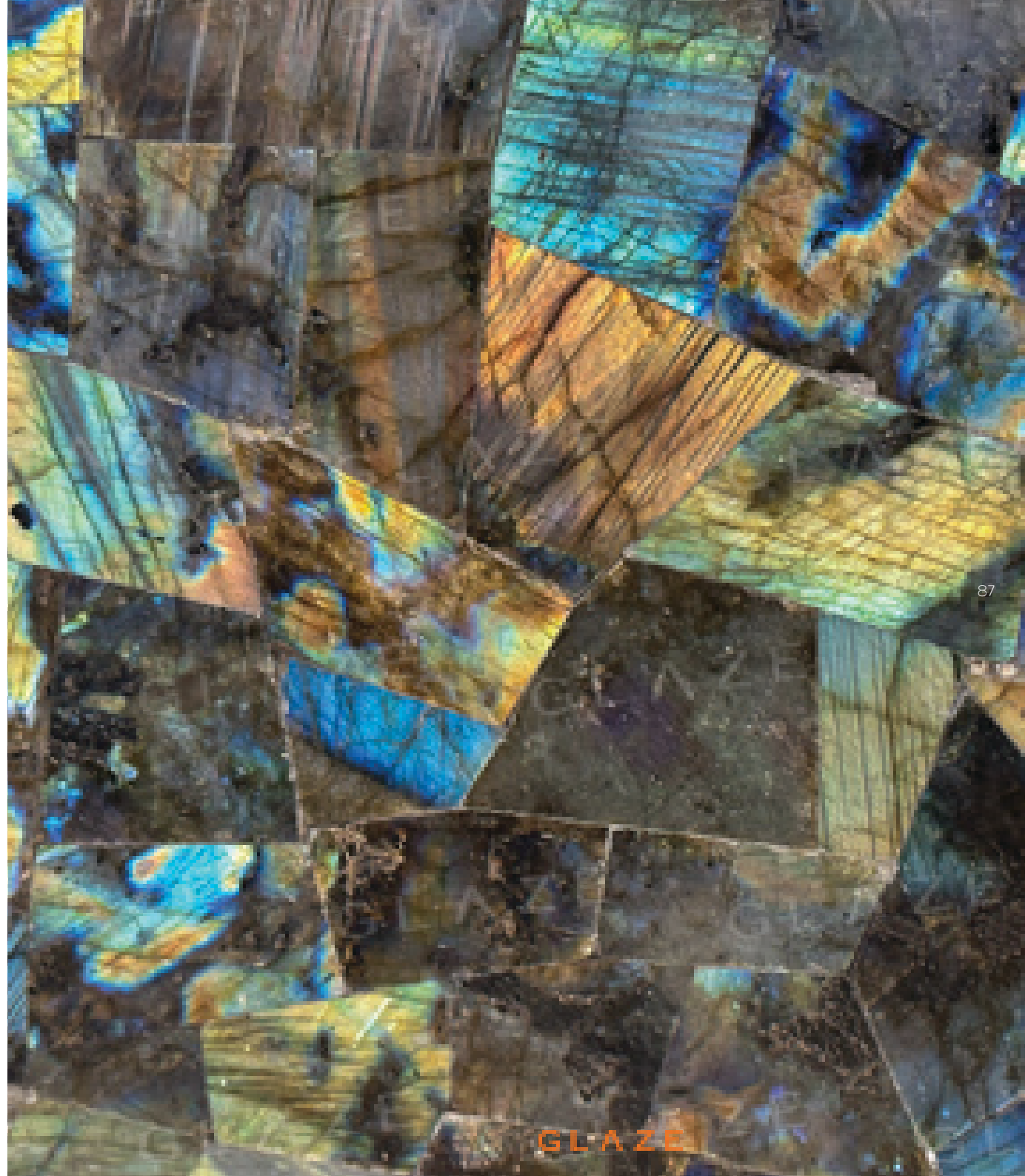
JASPER DESERT





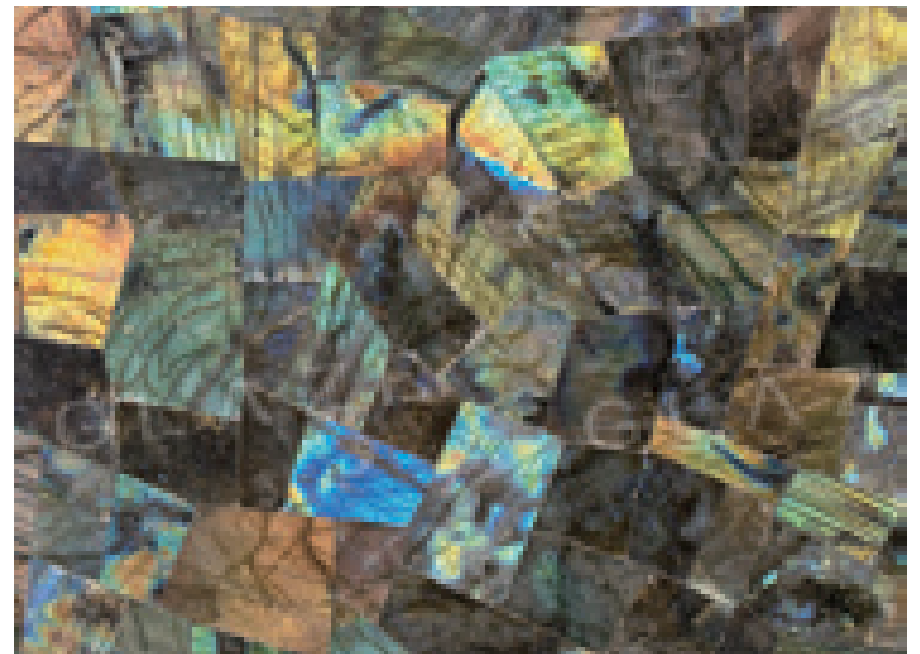
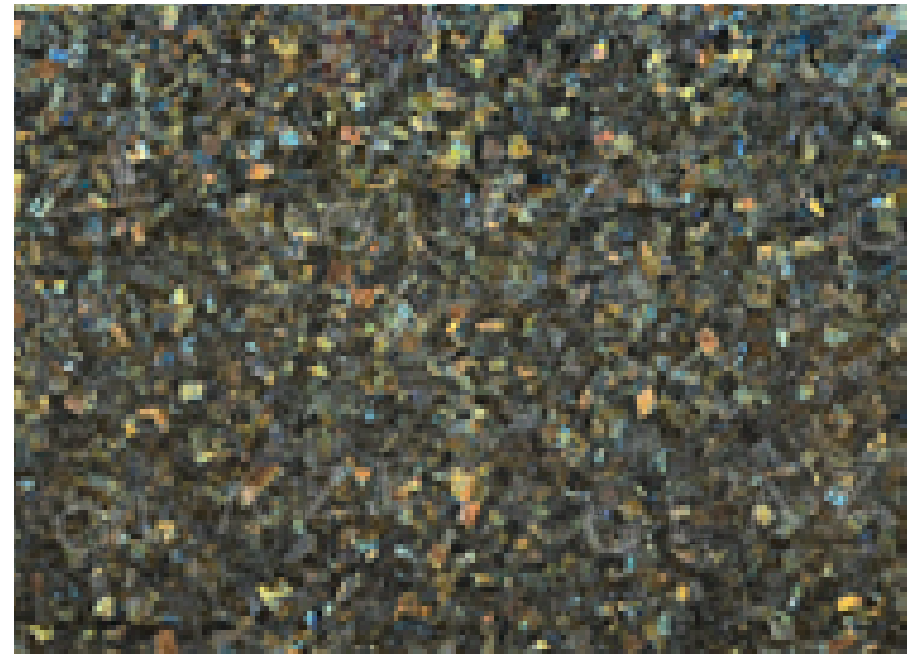
# Labradorite

Celebrated for its unique optical effect known as labradorescence, a shimmering play of color, labradorite's surface shifts between deep greys, blues, and golds, offering an ethereal quality. It was favored in Art Nouveau jewelry, where its mystical colors captured light in organic, dynamic forms.





LABRADORITE

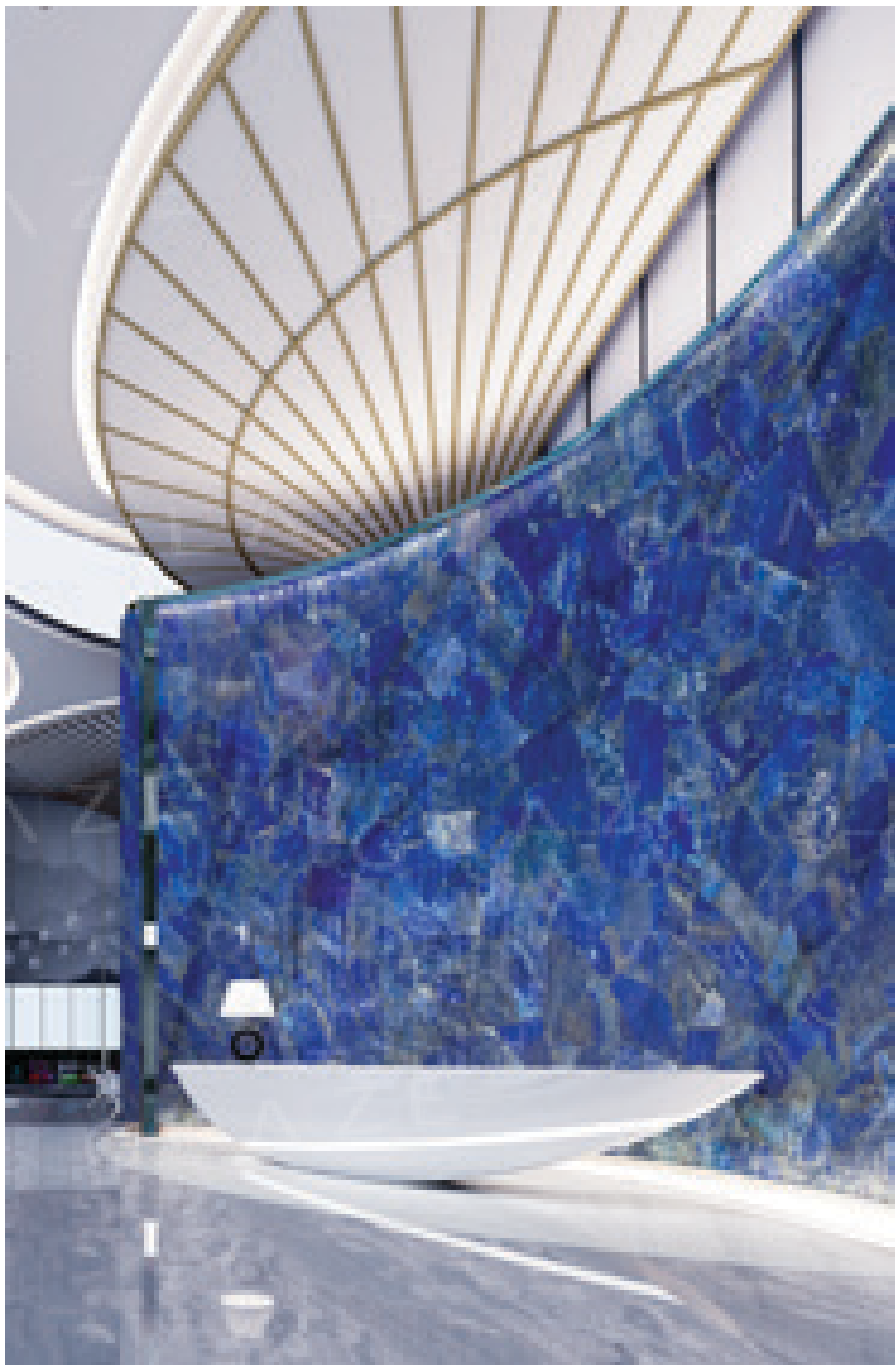


GLAZE

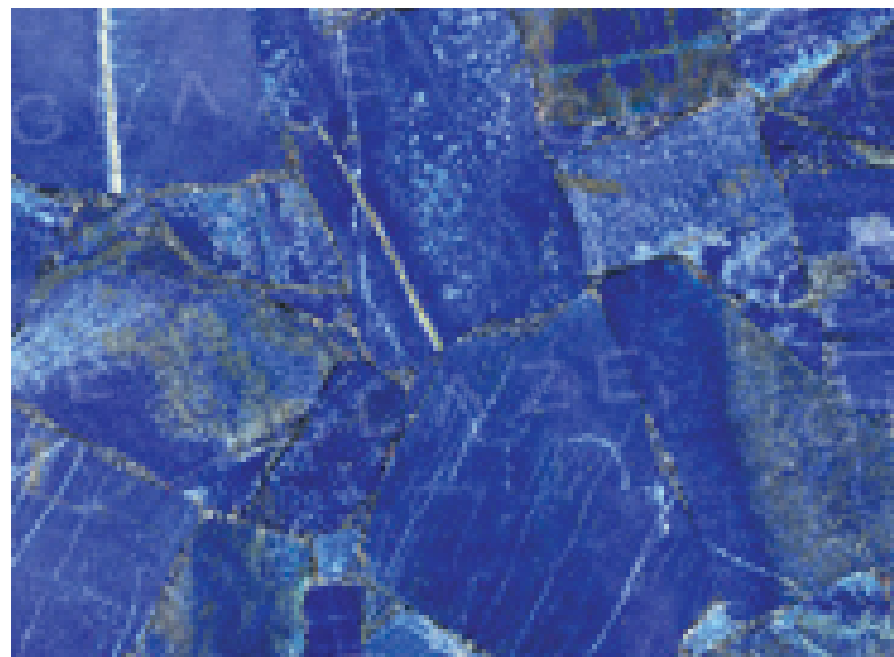
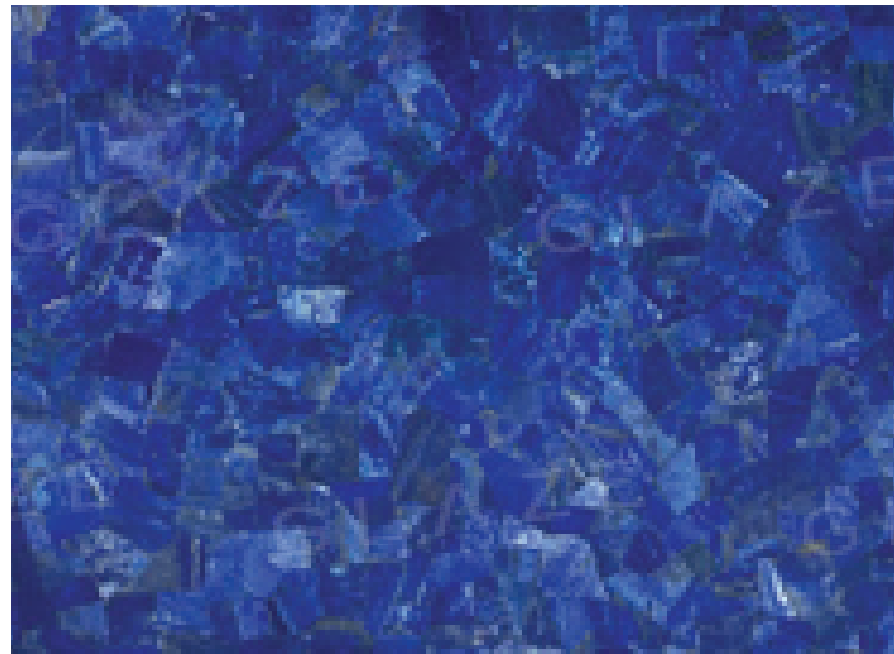
# Lapis Lazuli

A deep ultramarine stone flecked with gold-like pyrite, lapis lazuli has been prized since antiquity. It was ground into ultramarine pigment for Renaissance masterpieces and used in the funerary mask of Tutankhamen, symbolizing royalty and divine power.





LAPIS LAZULI



GLAZE

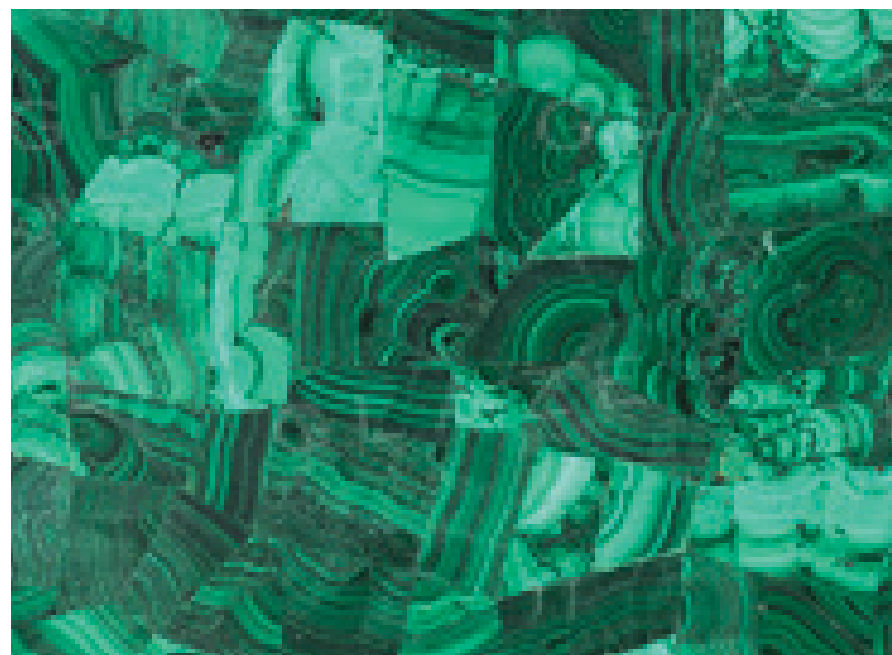
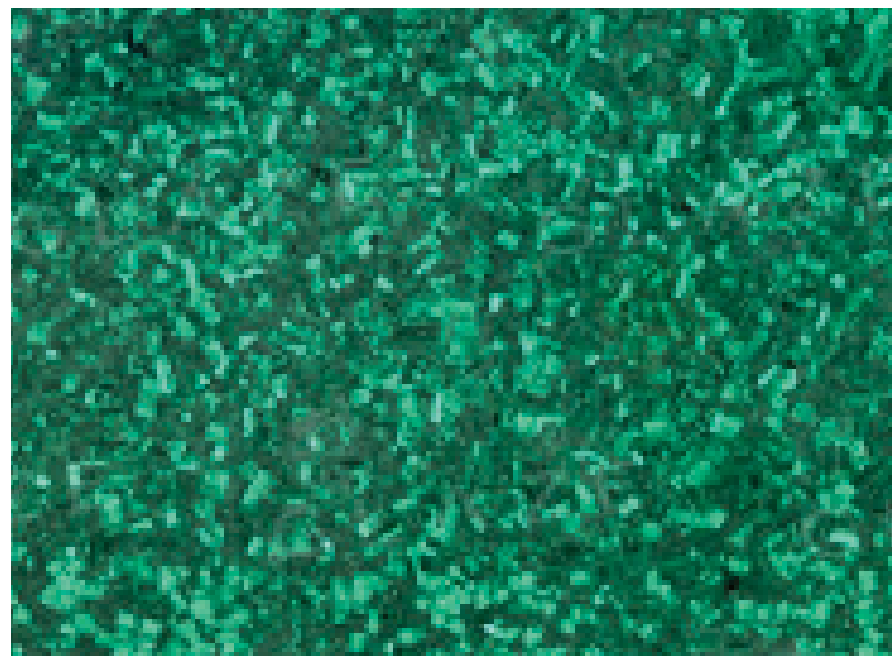
# Malachite

Recognized for its bold green color and distinctive swirling patterns, malachite brings luxury and drama to interiors, accessories, and fine jewelry. Extensively used in the Palace of Versailles—adorning columns, fireplaces, and vases as a symbol of opulence—malachite continues its legacy of elegance today in high-end pieces, including iconic designs by Van Cleef & Arpels.





MALACHITE



GLAZE

# Abalone

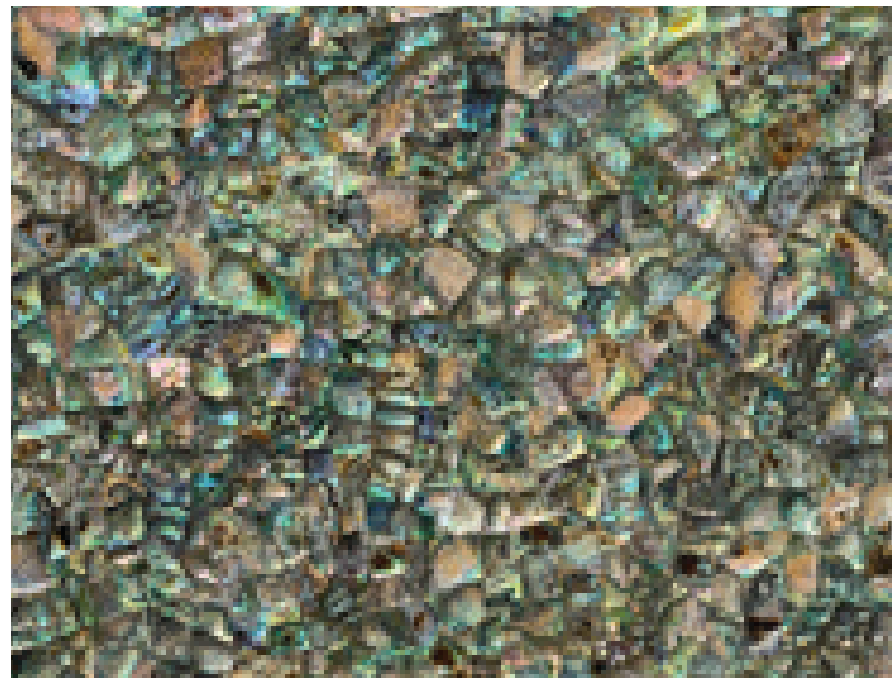
With vivid blues, greens, and purples, abalone shell displays a natural opalescence that shifts with the light. It is often used for accents requiring movement and visual depth, as seen in embellishments on 19th-century musical instruments like guitars and mandolins.

ABALONE GREEN





ABALONE GREEN



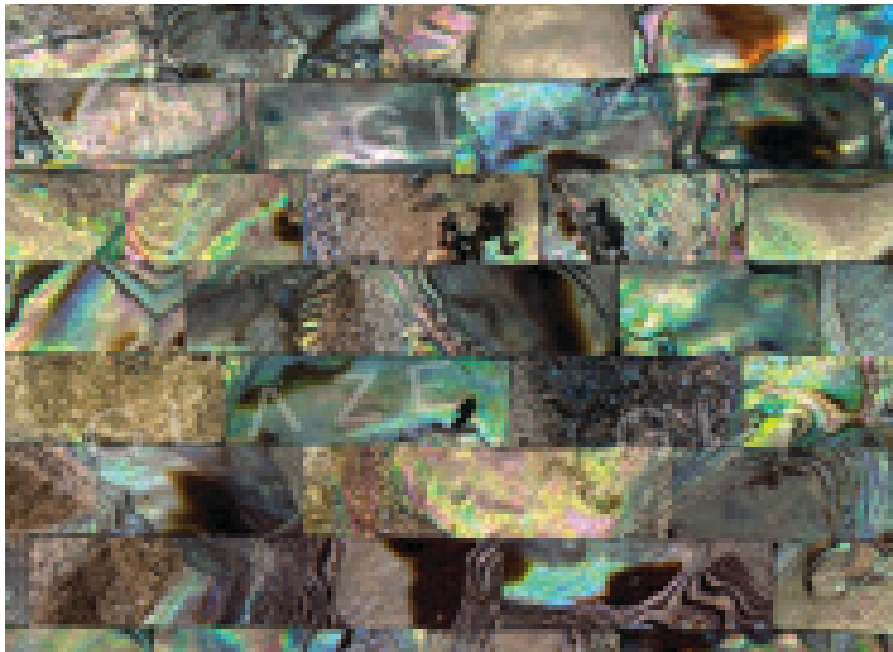
GLAZE



ABALONE GREEN RETRO



102



103

# Mother of Pearl

Harvested from the inner lining of mollusk shells, mother of pearl is valued for its soft iridescence and creamy luster. It brings a sense of delicacy and refinement to surfaces and inlays, and was widely used in 18th-century French furniture, including Louis XV cabinets, for intricate decorative accents.

MOTHER OF PEARL WHITE RETRO



GLAZE



MOTHER OF PEARL WHITE RANDOM



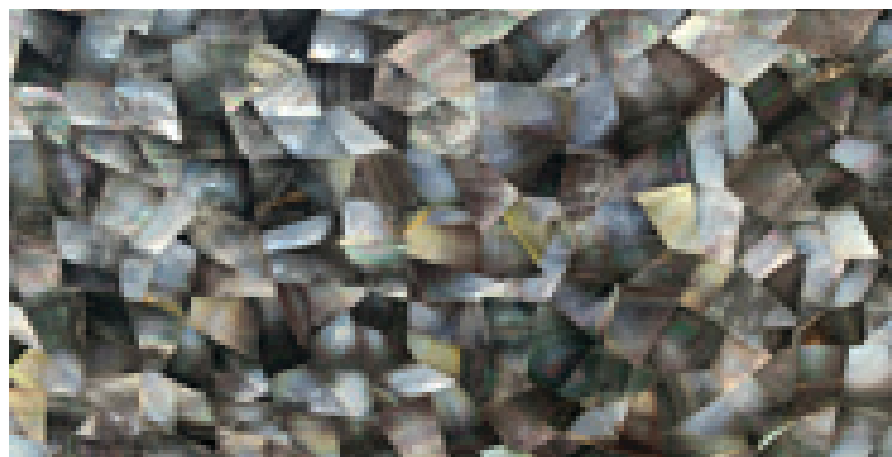
GLAZE

MOTHER OF PEARL WHITE RETRO





MOTHER OF PEARL BLACK RANDOM



GLAZE

MOTHER OF PEARL BLACK RETRO



# Tiger Eye

Characterized by its silky luster and golden-brown bands, tiger eye has a dynamic, shimmering surface associated with grounding energy and bold visual impact. In ancient Egypt, tiger eye was carved into protective amulets worn by pharaohs and nobility.

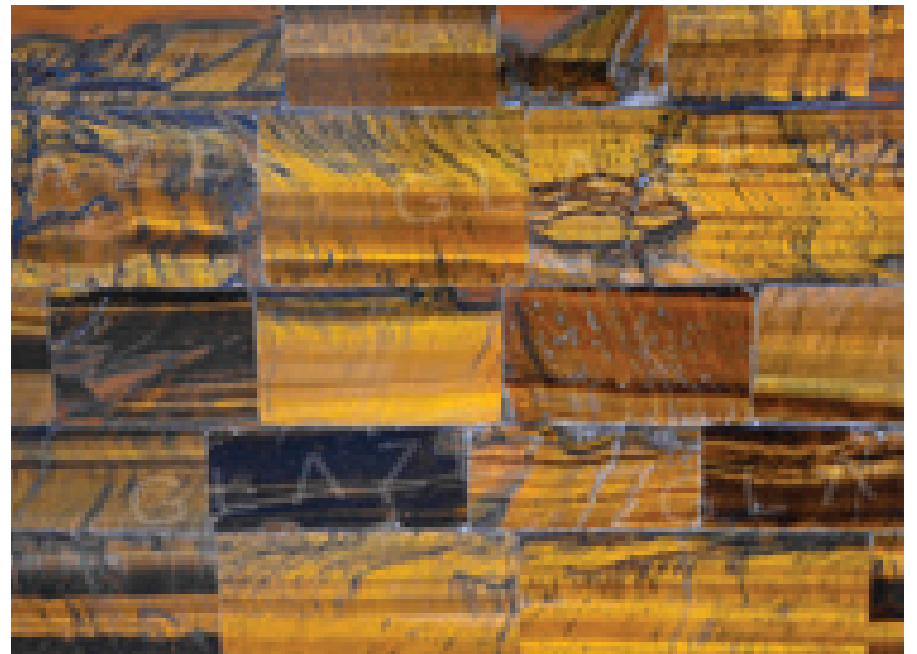


TIGER EYE BLUE

GLAZE



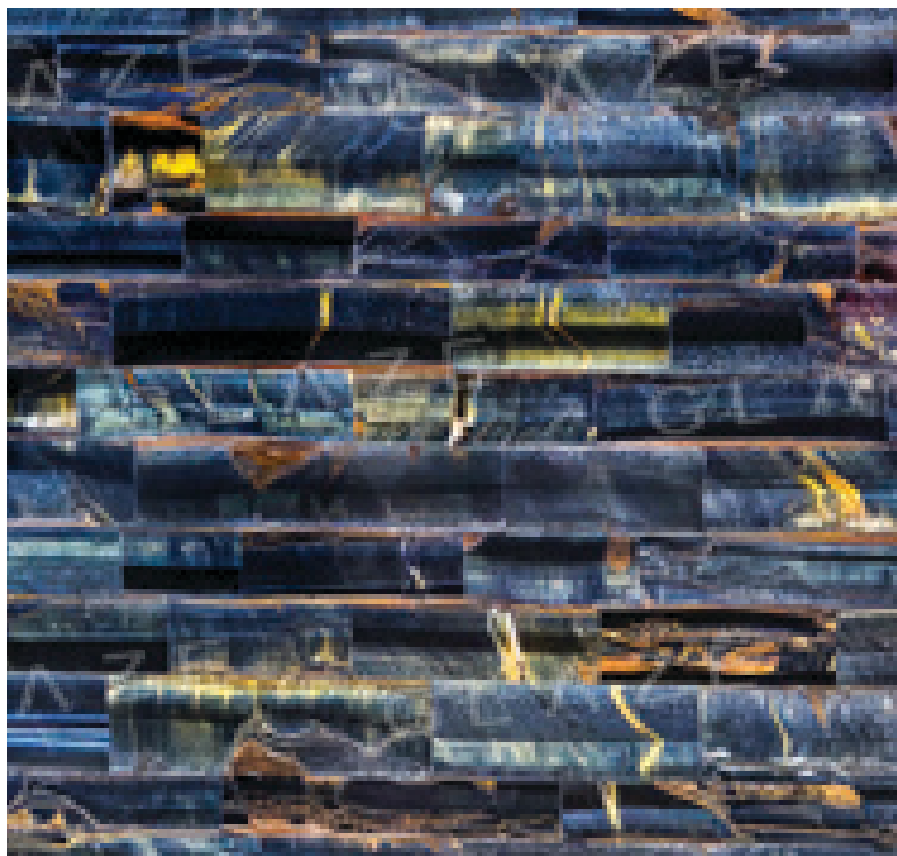
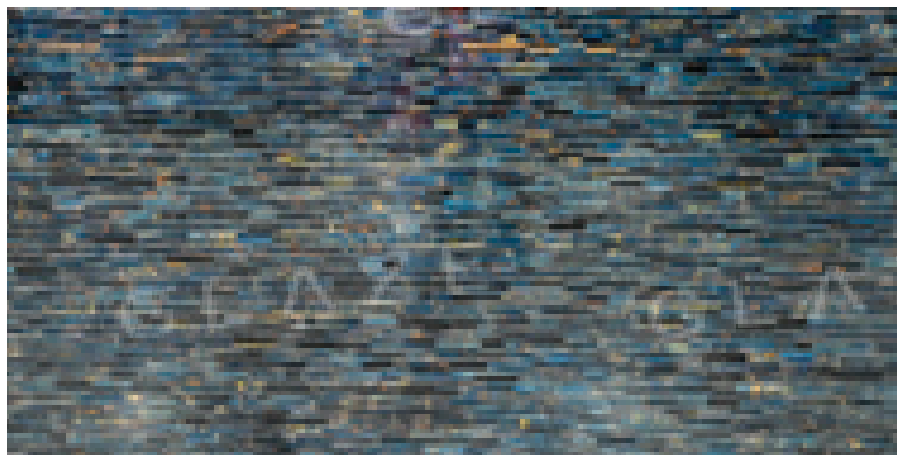
TIGER EYE GOLDEN



GLAZE



TIGER EYE BLUE



# Sodalite

Sodalite is a rich blue stone often streaked with white calcite, giving it a celestial appearance. It was favored in Russian Orthodox church iconography and decorative panels, lending depth and reverence to sacred interiors.

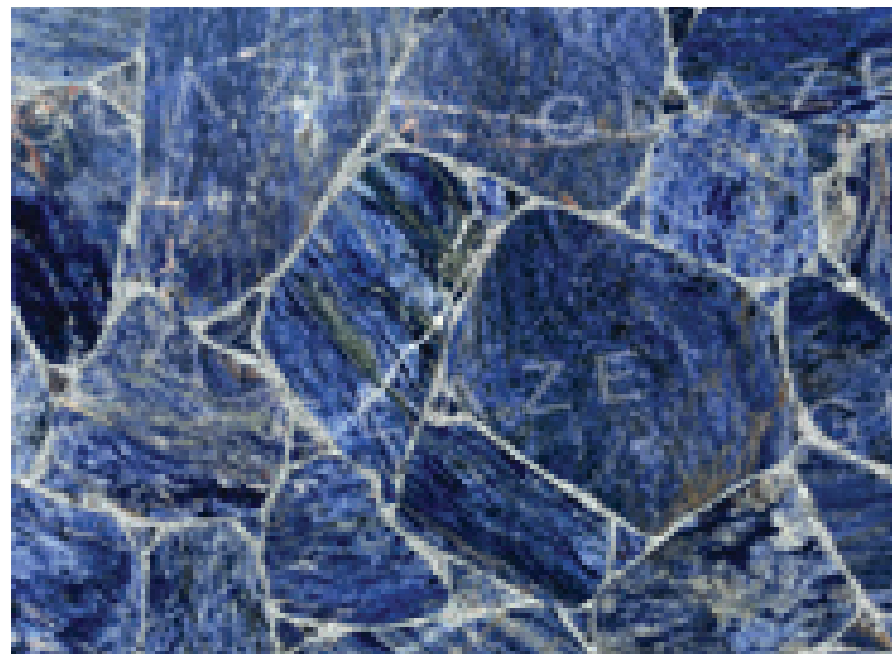
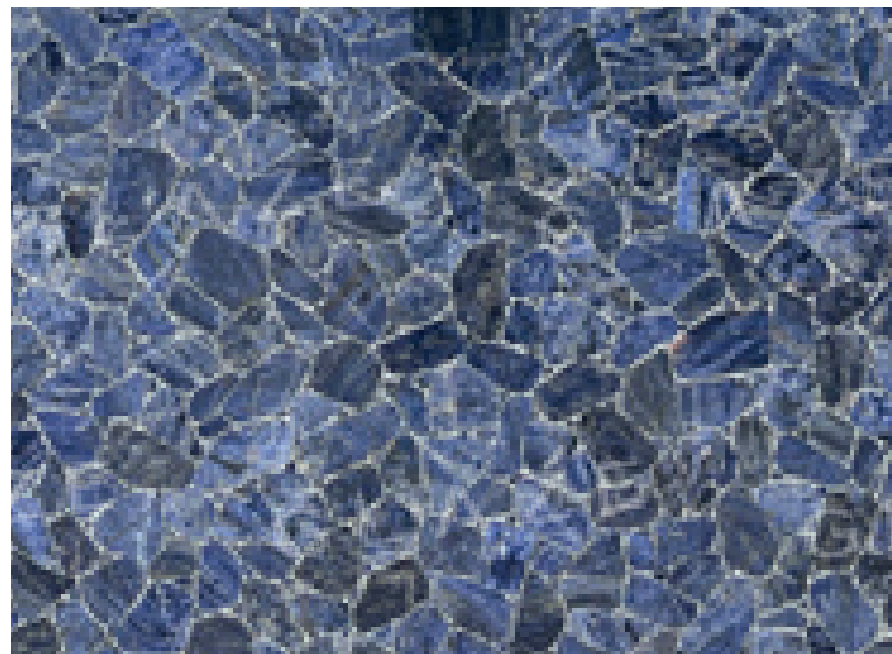
SODALITE COPPER

GLAZE

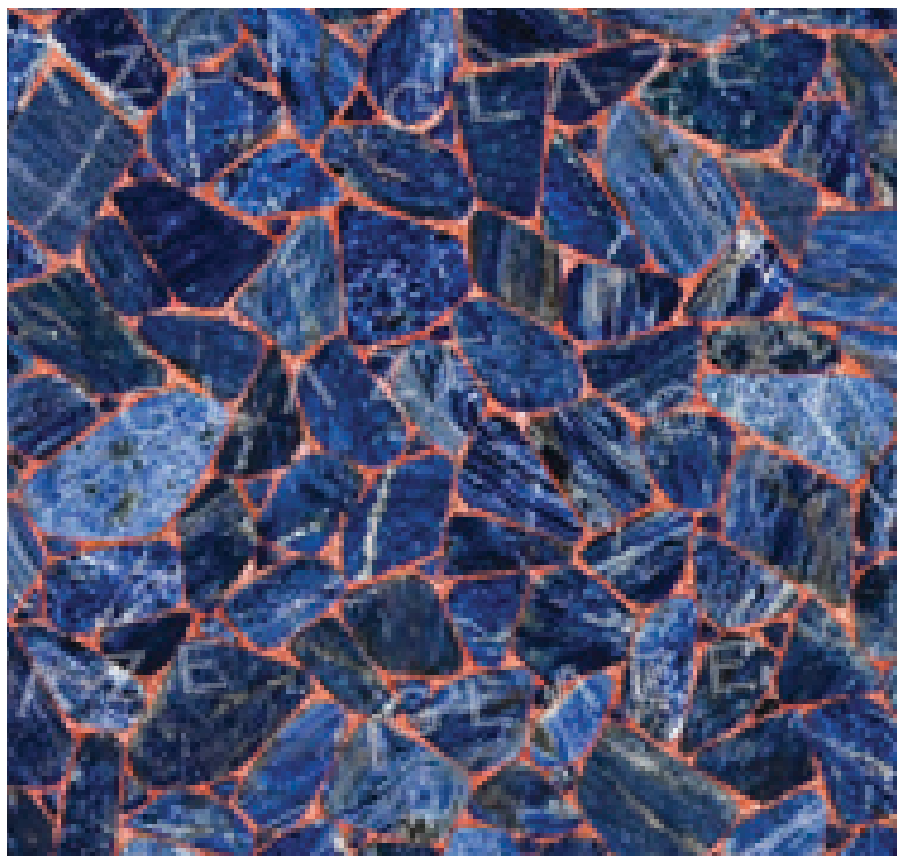
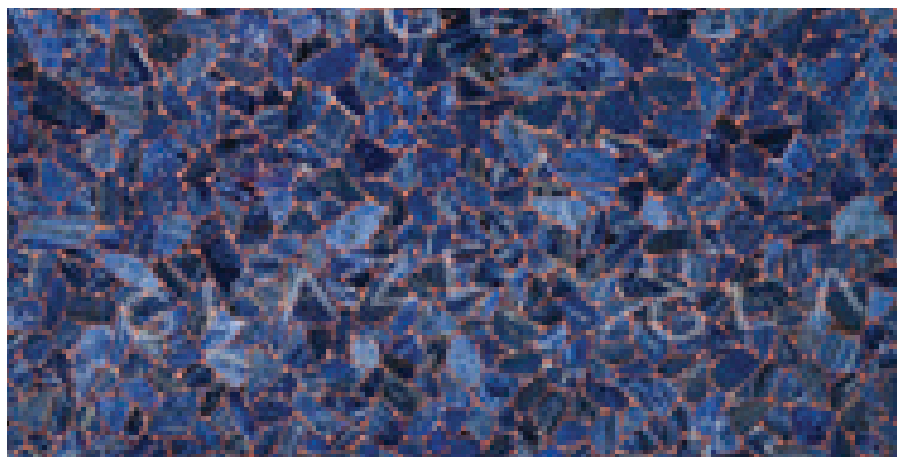




SODALITE SILVER



SODALITE COPPER



# Petrified Wood

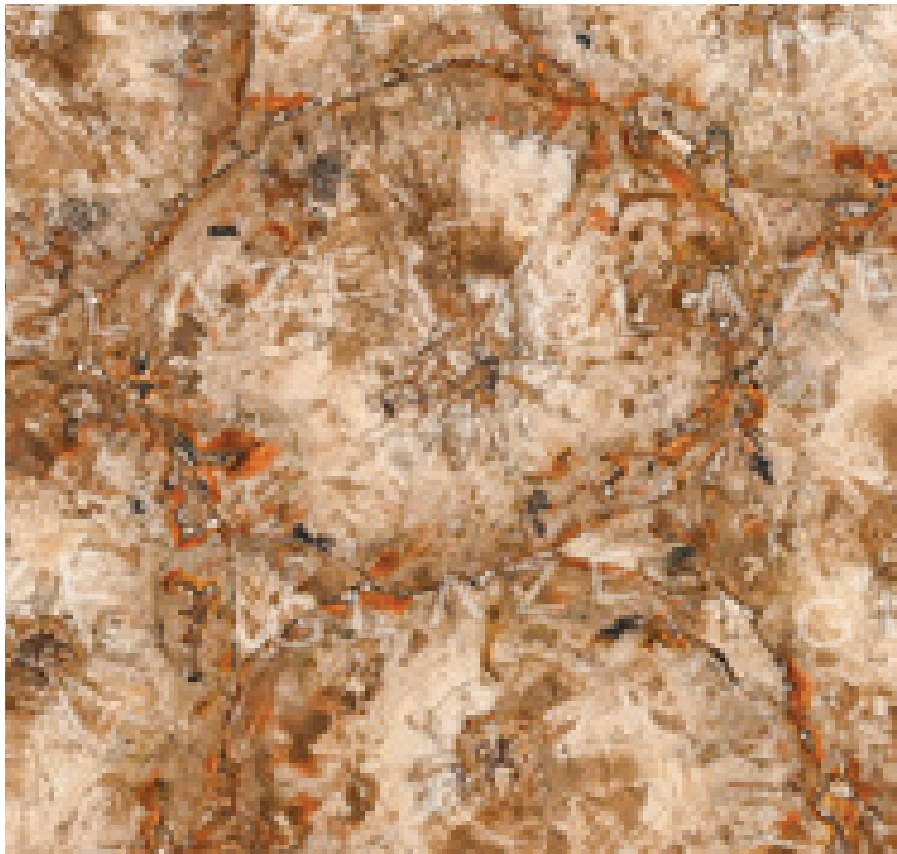
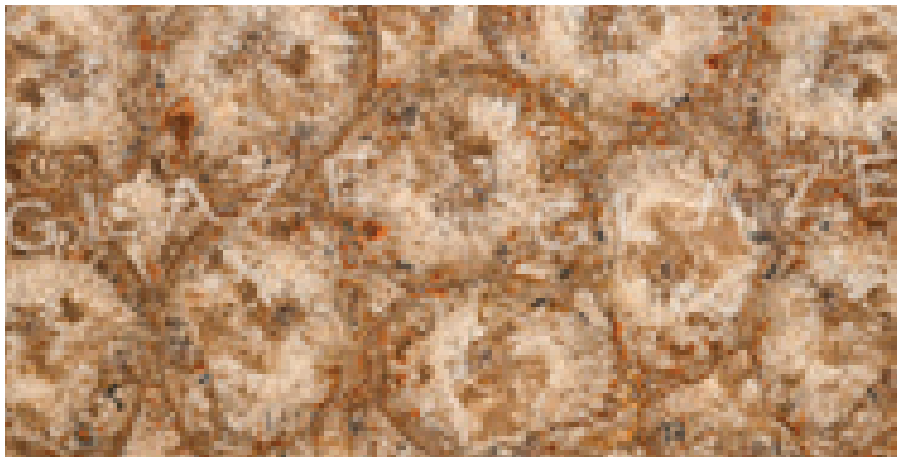
Formed from ancient trees mineralized over millions of years, petrified wood retains the structure of wood while gaining the hardness and beauty of stone. It was used decoratively as tabletops and inlays in Neolithic sites, symbolizing the connection between nature and human craft.

PETRIFIED WOOD BLACK & WHITE RETRO

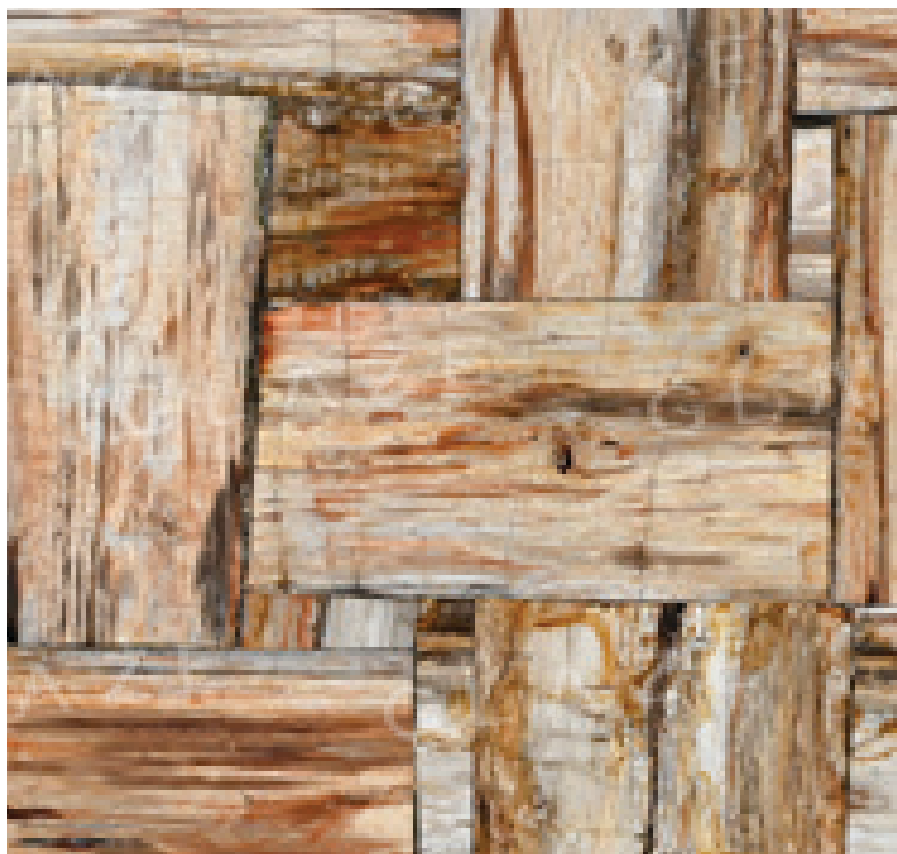
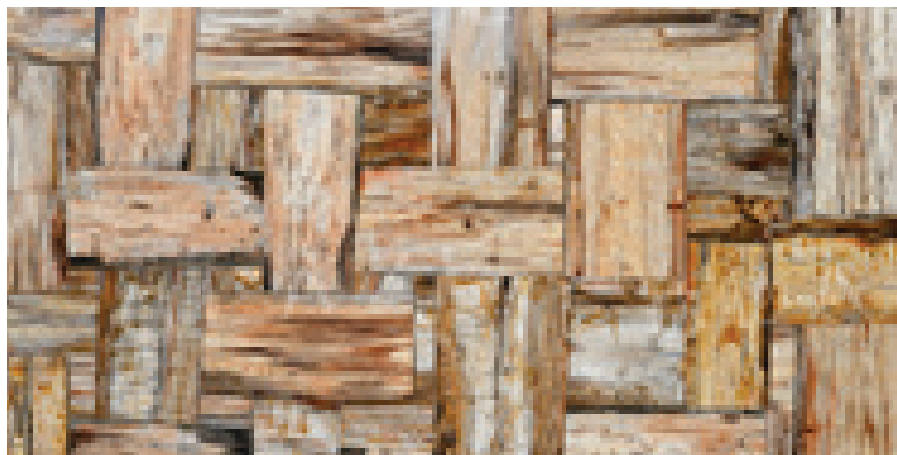
GLAZE



PETRIFIED WOOD CREMO CIRCULAR

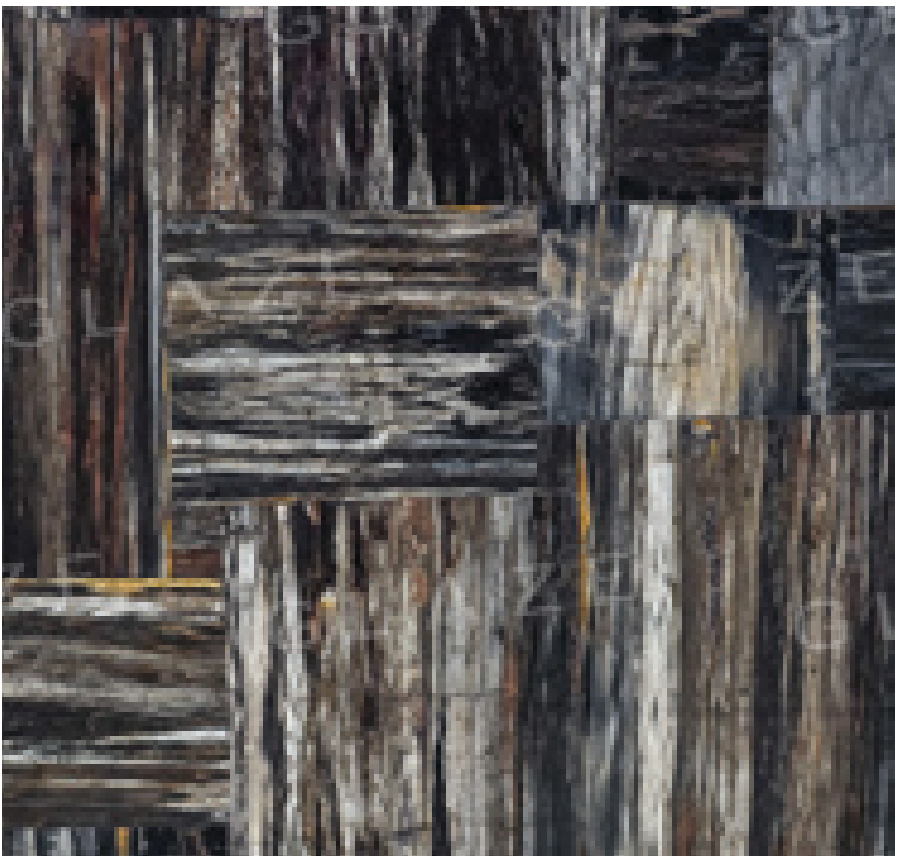
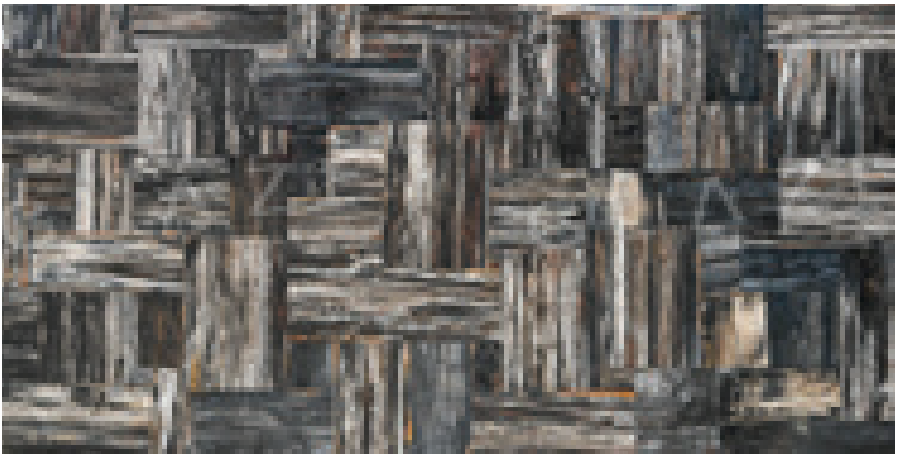


PETRIFIED WOOD CREMO RETRO





PETRIFIED WOOD BLACK & WHITE RETRO





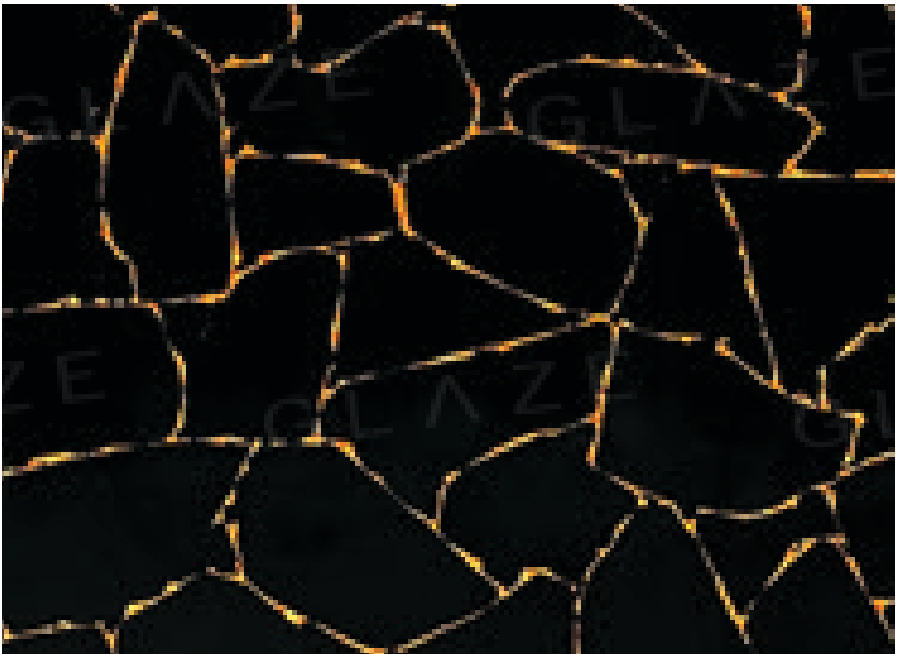
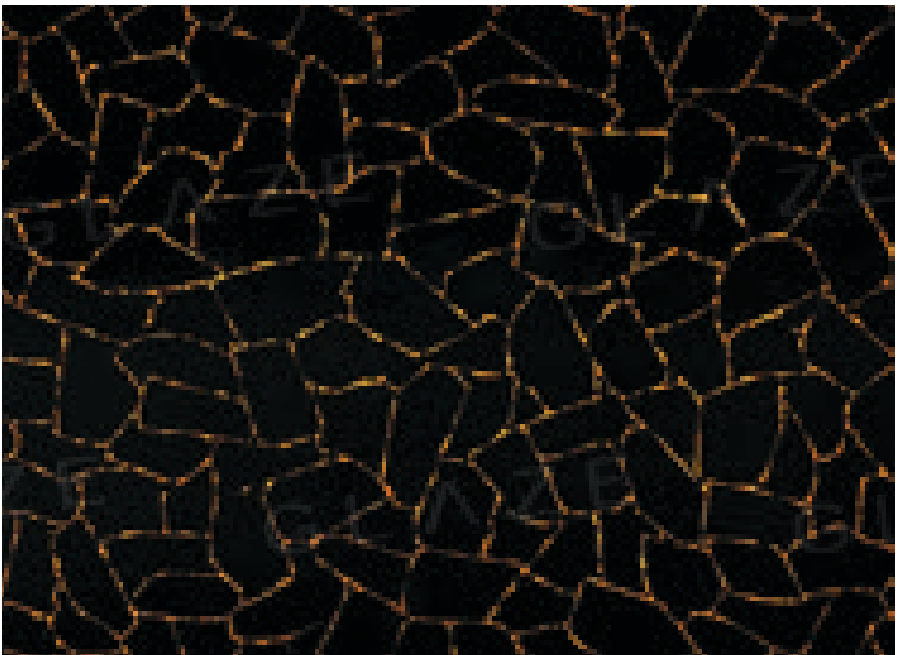
# Obsidian

A natural volcanic glass, obsidian has a dark, glossy surface with sharp clarity. Its deep black tone provides striking contrast and modern edge. Mesoamerican cultures used obsidian in architecture and ritual objects, prized for its sharpness and mystical significance.





OBSIDIAN WITH GOLD





GLAZE.AE / PRECIOUSSTONE